



CIRRUS FLT PLAN FTD.JOSEPH EXT.93018 ACARS.LHR SBRR
 P 1 OF 9 RYR666/04 IBZ-DUB ETD 1300/04FEB24 B738 EI-ENI
 C/S RYR72NV P 1.0 LEIB-EIDW M 0.0 T/O SLOT

55.6 ZFW 1600 ATA TNKS ADVISORY INFORMATION
 NO STATS AVAILABLE
 65.0 TOW 1300 ATD USED
 58.6 LAW 0300 TOT LEFT
 13.9 PL HOLD W A ACH FL

TRIM MIN COST VAR SPD - FP NO. 2 0016 05FEB24

ROUTE DEF RTE FL360

TIF 6430 2.38 1050NM W/C M7 TOC OAT M58
 MIN CONT.... 609 15 WIND 21006
 DIVF 1414 35 SNN /EINN FL200 M50 124NM
 RES 998 30 PLAN REM 3.0 TOT RES 2.4
 REQ 9451 3.58 COST INDEX 23
 EXTRA 0 WX ATC
 TAXI 113 (10) ELEV IBZ R24 23
 TANKS 9564 KG ELEV DUB R28R 243
 NINE FIVE SIX FOUR KG **FMC DRAG/FF P 0.0/ P 0.0**

ALT SUMMARY	DIST	TRK	FL	COMP	TIME	FUEL	DIV SPD SCHED
SNN/EINN C1	124	246	200	M48	00.35	1414	COST INDEX 0

WEIGHT CHANGE P/M 1000 KG FP 81/FM 82 KG TP 0 TRIP FUEL
 SPEED CHANGE CI 0 / M0.76 FM 195 KG TP 3 TRIP FUEL

RMK/ NONE



CIRRUS FLT PLAN

PAGE 2 OF 9 RYR666/04 - PLAN 2 0016 05FEB24

WAYPOINT COUNT 8 CWC 8 (NOT TOC/TOD) TOT RES 2.4

POSITION ID/FREQ ETA/RTA ATA TTLT GDTG REM REQ

MSA AWY /ITT/ -TRM- DIS TIM FL COMP MACH G/S

IBIZA EPAMA2E .../... ... 0.00 1050 6.4

3.3 EPAMA2E/243/ -VAR- 6 2 ... M002

IB600 .../... ... 0.02 1044 6.1

3.3 EPAMA2E/324/ -323- 8 2 ... P000

IB601 .../... ... 0.04 1036 5.9

3.3 EPAMA2E/014/ -013- 42 7 ... P004

EPAMA .../... ... 0.11 994 5.3

2.0 DCT /354/ -353- 45 5 ... P011

MARTA .../... ... 0.16 949 4.9

2.0 DCT /354/ -353- 18 3 ... P005

TOC .../... ... 0.19 931 4.8

2.0 DCT /354/ -354- 3 360 P005 .782/452

EBROX .../... ... 0.19 928 4.7

3.8 DCT /354/ -352- 27 3 ... P005 .782/452

UMURE .../... ... 0.22 901 4.6

3.3 DCT /355/ -354- 3 1 ... P005 .782/452

XIKEN .../... ... 0.23 898 4.6

5.8 DCT /355/ -354- 8 1 ... P005 .782/452



CIRRUS FLT PLAN

PAGE 3 OF 9 RYR666/04 - PLAN 2 0016 05FEB24

WAYPOINT COUNT 9 CWC 17 (NOT TOC/TOD) TOT RES 2.4

POSITION	ID/FREQ	ETA/RTA	ATA	TTLT	GDTG	REM	REQ
MSA	AWY /ITT/	-TRM-	DIS	TIM	FL	COMP	MACH G/S

KARES		.../...	...	0.24	890		4.5
5.8 DCT	/355/	-354-	13	2	...	M001	.782/446

ARBEK		.../...	...	0.26	877		4.5
4.6 DCT	/355/	-354-	9	1	...	M001	.782/446

REBUL		.../...	...	0.27	868		4.4
8.4 DCT	/355/	-354-	27	4	...	M001	.782/446

USKAR		.../...	...	0.31	841		4.3
11.1 DCT	/355/	-354-	18	2	...	P000	.782/447

MOPAS		.../...	...	0.33	823		4.2
11.7 DCT	/355/	-354-	20	3	...	M007	.782/440

GIROM		.../...	...	0.36	803		4.1
11.1 DCT	/345/	-344-	42	5	...	M010	.783/437

GONUP		.../...	...	0.41	761		3.9
3.0 DCT	/336/	-335-	180	25	...	M014	.783/433

MANAK		.../...	...	1.06	581		2.9
2.3 UY110	/321/	-321-	30	5	...	M019	.782/427

TIRAV		.../...	...	1.11	551		2.7
2.3 UT183	/313/	-313-	35	5	...	M020	.782/426



CIRRUS FLT PLAN

PAGE 4 OF 9 RYR666/04 - PLAN 2 0016 05FEB24

WAYPOINT COUNT 8 CWC 25 (NOT TOC/TOD) TOT RES 2.4

POSITION	ID/FREQ	ETA/RTA	ATA	TTLT	GDTG	REM	REQ
MSA	AWY /ITT/	-TRM-	DIS	TIM	FL	COMP	MACH G/S

MOKOR		.../... ..	1.16	516		2.5	
2.2	UT183 /314/	-314-	49	6	...	M016	.781/429

BAGAD		.../... ..	1.22	467		2.3	
3.2	DCT /323/	-323-	143	20	...	M010	.780/434

DOLUR		.../... ..	1.42	324		1.5	
2.8	DCT /330/	-331-	98	14	...	M014	.779/429

UPCAB		.../... ..	1.56	226		1.0	
2.0	DCT /350/	-352-	54	7	...	M011	.778/432

EVRIN		.../... ..	2.03	172		0.8	
4.1	DCT /357/	-359-	51	7	...	M012	.778/431

BUNED		.../... ..	2.10	121		0.5	
4.1	BUNED3L/357/	-359-	22	4	...	M012	.777/430

TOD		.../... ..	2.14	99		0.4	
3.3	BUNED3L/357/	-001-	1		...	M011	

DIRUM		.../... ..	2.14	98		0.4	
4.5	BUNED3L/046/	-048-	15	3	...	P034	

KEPOR		.../... ..	2.17	83		0.3	
4.2	BUNED3L/094/	-096-	11	2	...	P061	



CIRRUS FLT PLAN

PAGE 5 OF 9 RYR666/04 - PLAN 2 0016 05FEB24

WAYPOINT COUNT 9 CWC 34 (NOT TOC/TOD) TOT RES 2.4

POSITION ID/FREQ ETA/RTA ATA TTLT GDTG REM REQ

MSA AWY /ITT/ -TRM- DIS TIM FL COMP MACH G/S

ARVOK .../... ... 2.19 72 0.3

2.1 BUNED3L/095/ -097- 9 2 ... P060

SORIN .../... ... 2.21 63 0.3

2.0 BUNED3L/060/ -062- 7 2 ... P045

SIVNA .../... ... 2.23 56 0.3

2.0 BUNED3L/036/ -038- 7 1 ... P022

SUGAD .../... ... 2.24 49 0.2

2.0 BUNED3L/012/ -014- 7 2 ... P001

DW704 .../... ... 2.26 42 0.2

2.0 BUNED3L/348/ -350- 7 1 ... M031

DW705 .../... ... 2.27 35 0.2

2.0 BUNED3L/324/ -326- 7 2 ... M051

DW706 .../... ... 2.29 28 0.2

2.0 BUNED3L/219/ -221- 10 2 ... M027

PIZSA .../... ... 2.31 18 0.2

2.3 BUNED3L/258/ -260- 18 7 ... M044

DUBLIN INTL BUNED3L .../... ... 2.38



CIRRUS FLT PLAN

PAGE 6 OF 9 RYR666/04 - PLAN 2 0016 05FEB24

DESTINATION ALTERNATE SUMMARY

ALTN	MSA	VIA
EINN/24	4.4	PELIG2J PELIG DCT DIGAN DIGAN2D



CIRRUS FLT PLAN

PAGE 7 OF 9 RYR666/04 - PLAN 2 0016 05FEB24

LAT	LONG	WAYPT	ITT	DIS	FL	TMP	SECTOR W/V			
							100	200	310	350
N3852.4E00122.4	LEIB	243	6							
N3849.5E00115.1	IB600	324	8		P09	19002	24004	19006	15011	
N3855.7E00109.4	IB601	014	42		M01	19002	24004	19006	15011	
N3936.2E00122.8	EPAMA	354	45		M35	07002	27004	17008	16011	
N4021.3E00116.8	MARTA	354	18		M53	07002	27004	17008	16011	
							320	340	360	380
N4042.5E00113.9	EBROX	354	27	360	M58	23006	22005	21006	20007	
N4109.0E00110.3	UMURE	355	3	360	M58	23006	22005	21006	20008	
N4111.8E00110.0	XIKEN	355	8	360	M58	23006	22005	21006	20008	
N4119.9E00109.1	KARES	355	13	360	M58	23006	22005	21006	20008	
N4132.6E00107.8	ARBK	355	9	360	M58	28010	28012	27012	26012	
N4141.9E00106.8	REBUL	355	27	360	M58	28010	28011	27012	26012	
N4208.6E00104.0	USKAR	355	18	360	M58	28010	28011	27012	26012	
N4226.1E00102.1	MOPAS	355	20	360	M58	28010	28011	27012	26012	
N4246.5E00059.8	GIROM	345	42	360	M58	29019	29021	29020	28020	
N4327.6E00045.5	GONUP	336	180	360	M58	29019	29020	28020	28020	
N4612.8W00056.5	MANAK	321	30	360	M58	28019	28023	28026	28029	
N4635.9W00123.4	TIRAV	313	35	360	M59	27015	27019	28026	28032	
N4700.4W00200.8	MOKOR	314	49	360	M59	26015	28023	27026	27029	
N4735.0W00252.9	BAGAD	323	143	360	M59	26013	27015	27021	27027	
N4929.1W00503.4	DOLUR	330	98	360	M60	24013	25012	26017	26022	
N5053.8W00619.0	UPCAB	350	54	360	M60	27029	27028	27027	27027	
N5146.9W00633.8	EVRIN	357	51	360	M60	27042	27041	27039	28036	
N5237.4W00637.8	BUNED	357	22	360	M60	28056	28055	28054	28054	
							100	200	310	350
N5300.2W00639.7	DIRUM	046	15		M59	28054	27057	28057	27054	
N5310.3W00622.0	KEPOR	094	11		M45	28051	28057	28060	28060	
N5309.3W00603.6	ARVOK	095	9		M36	28051	28057	28060	28060	
N5308.5W00548.4	SORIN	060	7		M28	28051	28057	28060	28060	



CIRRUS FLT PLAN

PAGE 8 OF 9 RYR666/04 - PLAN 2 0016 05FEB24

LAT	LONG	WAYPT	ITT	DIS	FL	TMP	SECTOR	W/V
N5311.9	W00538.5	SIVNA	036	7		M21 28051	28057	28060 28060
N5317.4	W00531.7	SUGAD	012	7		M15 28051	28057	28060 28060
N5324.1	W00529.2	DW704	348	7		M10 28052	28061	28063 28062
N5330.8	W00531.4	DW705	324	7		M05 28066	28073	28069 28070
N5336.4	W00538.1	DW706	219	10		M02 28066	28073	28069 28070
N5328.7	W00548.6	PIZSA	258	18		P05 28051	28057	28060 28060
DESC						FL 100	150	200 310
WIND						28051	28051	28057 28057

N5325.3W00616.2 EIDW

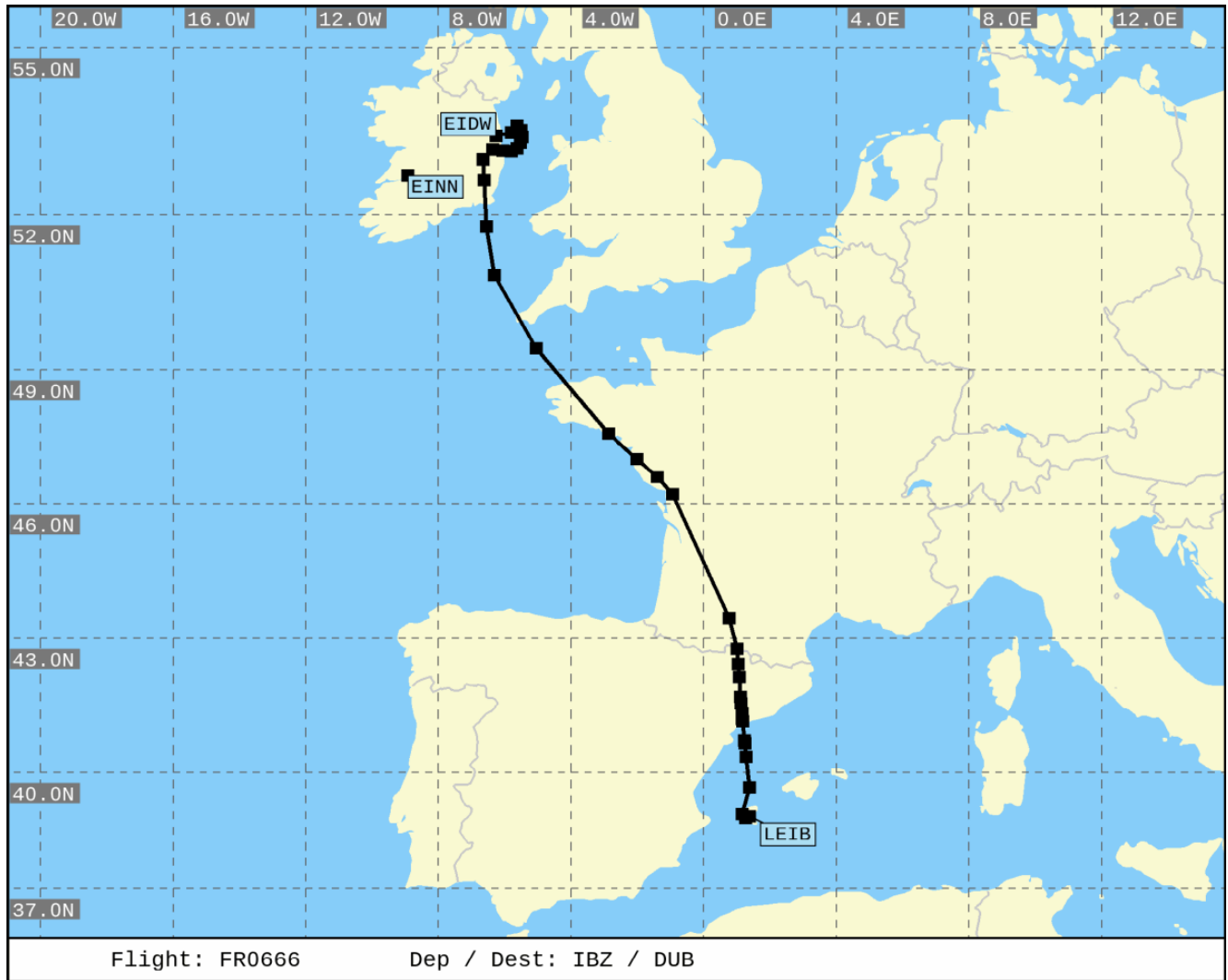
TOW 65008 KG ZFW 55557 KG PL 13875 KG LAW 58578 KG



CIRRUS FLT PLAN
PAGE 9 OF 9 RYR666/04 - PLAN 2 0016 05FEB24
FF LECBZQZX LFFFZQZX EGTZQZX EISNZQZX
050016 EGLLBASB
(FPL-RYR72NV-IS
-B738/M-SDE2E3FGHIRWXY/LB1
-LEIB1300
-N0447F360 EPAMA2E EPAMA DCT MARTA DCT EBROX DCT UMURE DCT XIKEN DCT
KARES DCT ARBEK DCT REBUL DCT USKAR DCT MOPAS DCT GIROM DCT GONUP
DCT MANAK UY110 TIRAV UT183 BAGAD DCT DOLUR DCT UPCAB DCT EVRIN DCT
BUNED BUNED3L
-EIDW0238 EINN
-PBN/A1B1C1D1S1S2 NAV/RNVD1E2A1 SUR/TCAS DOF/240204 REG/EIENI
EET/LFFF0036 EGT0142 EISN0203 OPR/RYR PER/C RVR/075 RMK/TCAS LAHSO
NOT AUTHORISED)

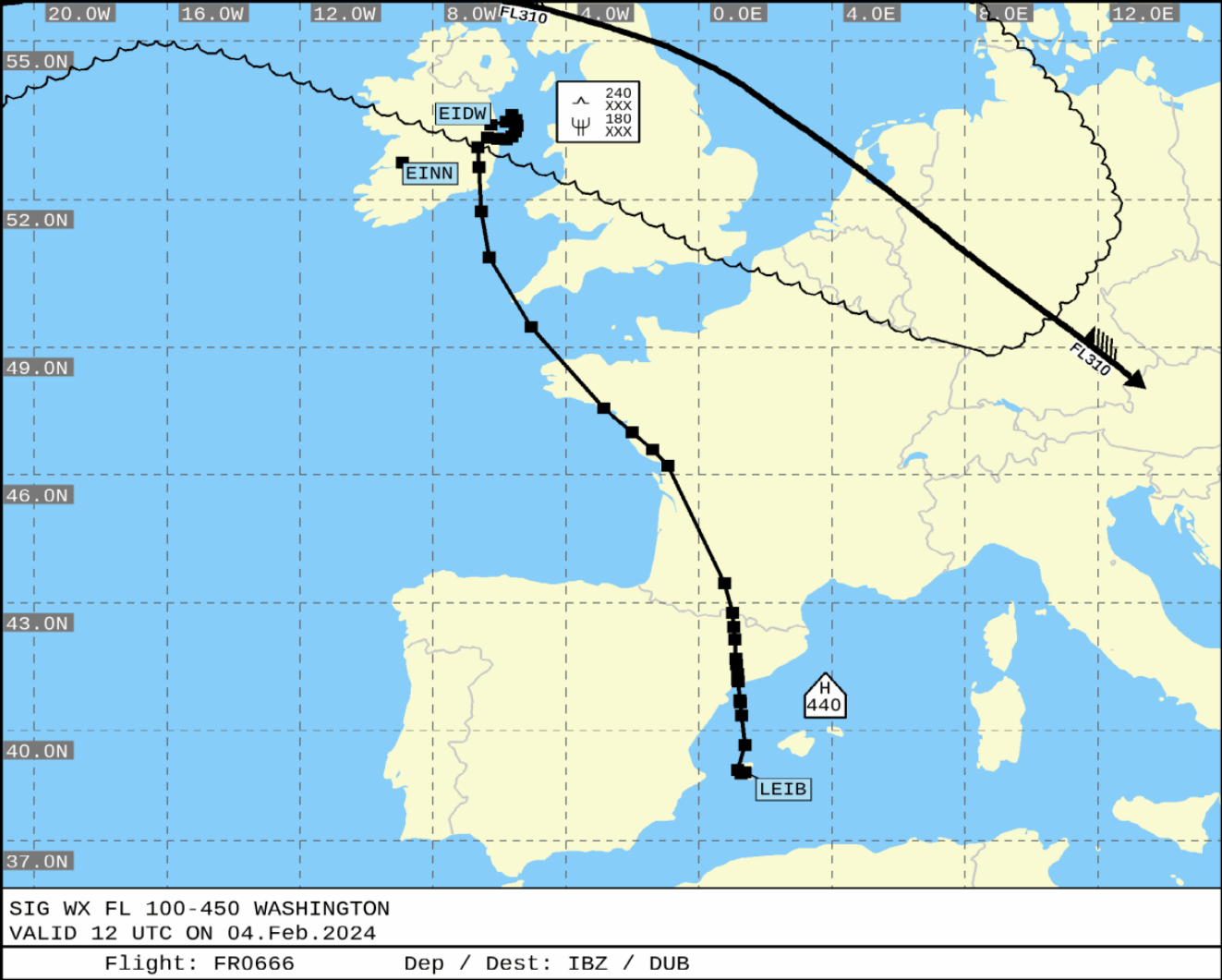


Route



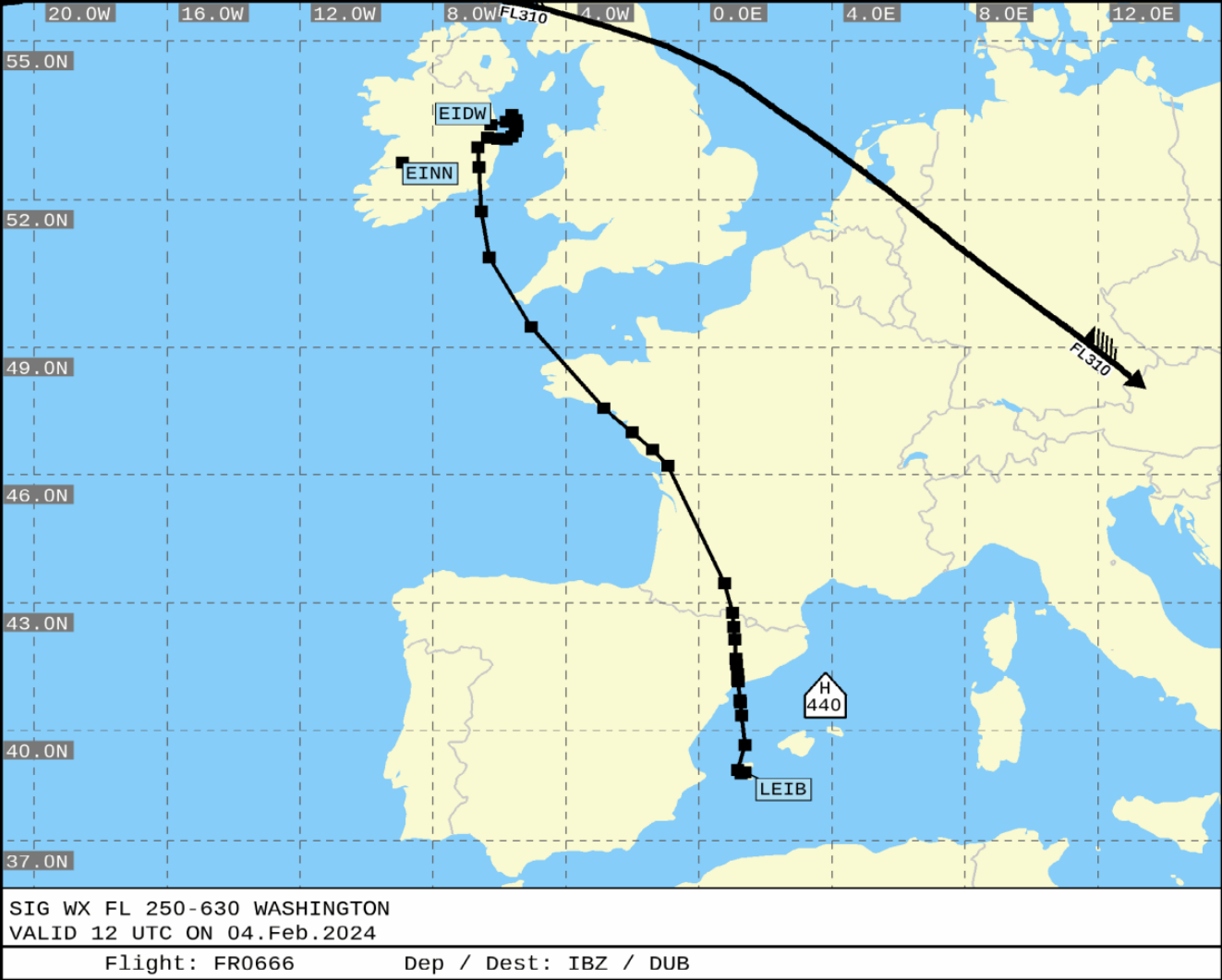


SigWx 1 of 2



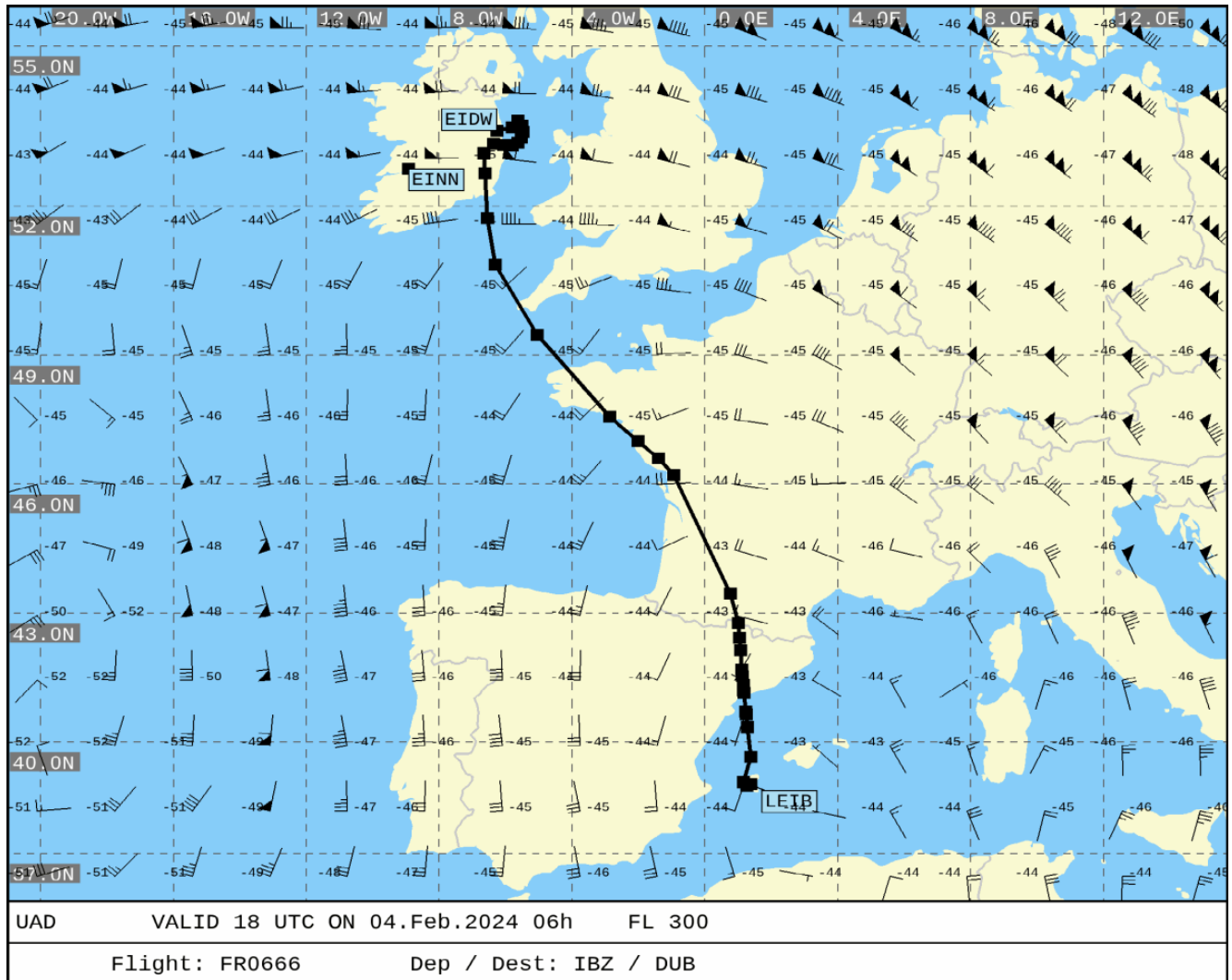


SigWx 2 of 2



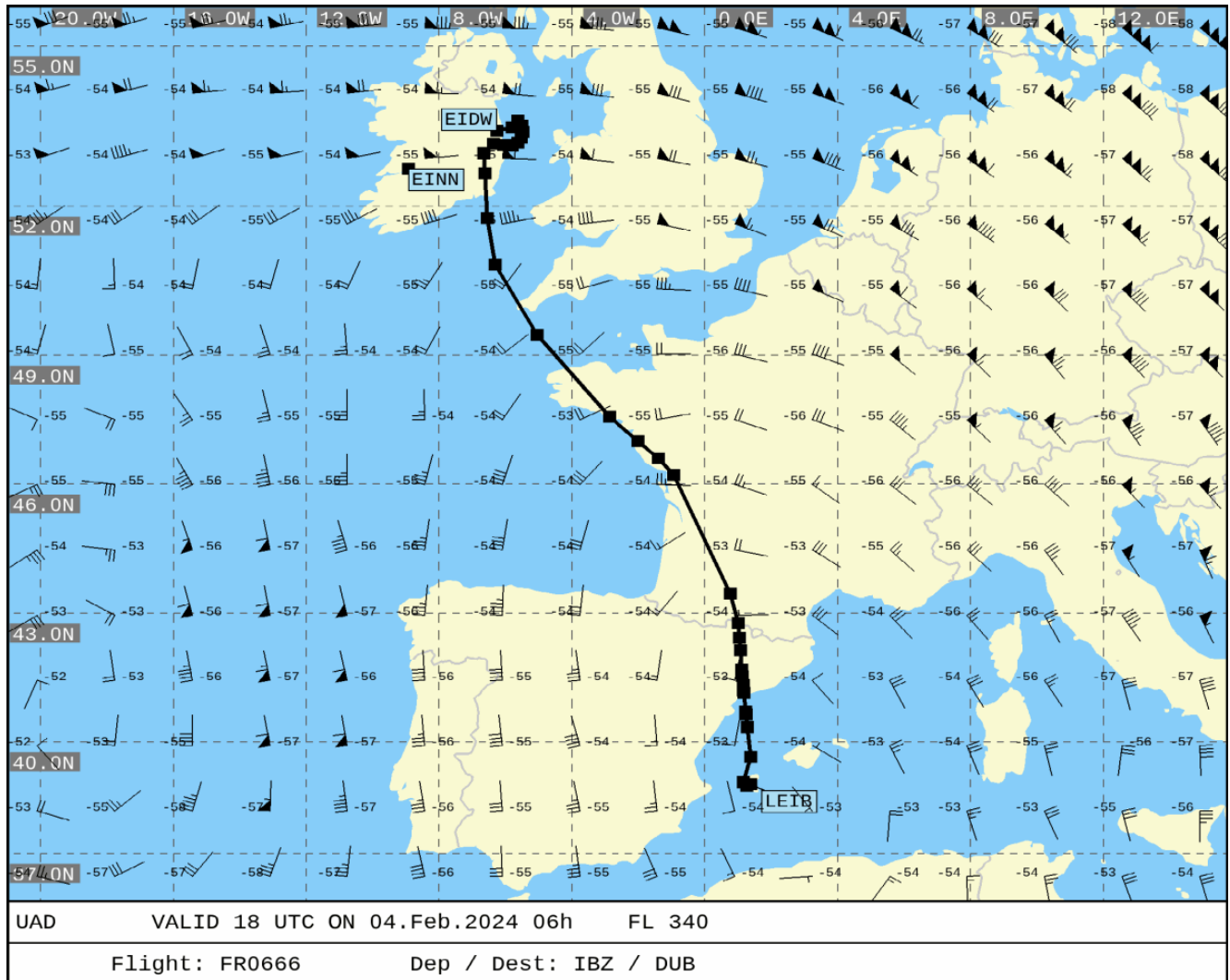


UAD 1 of 3



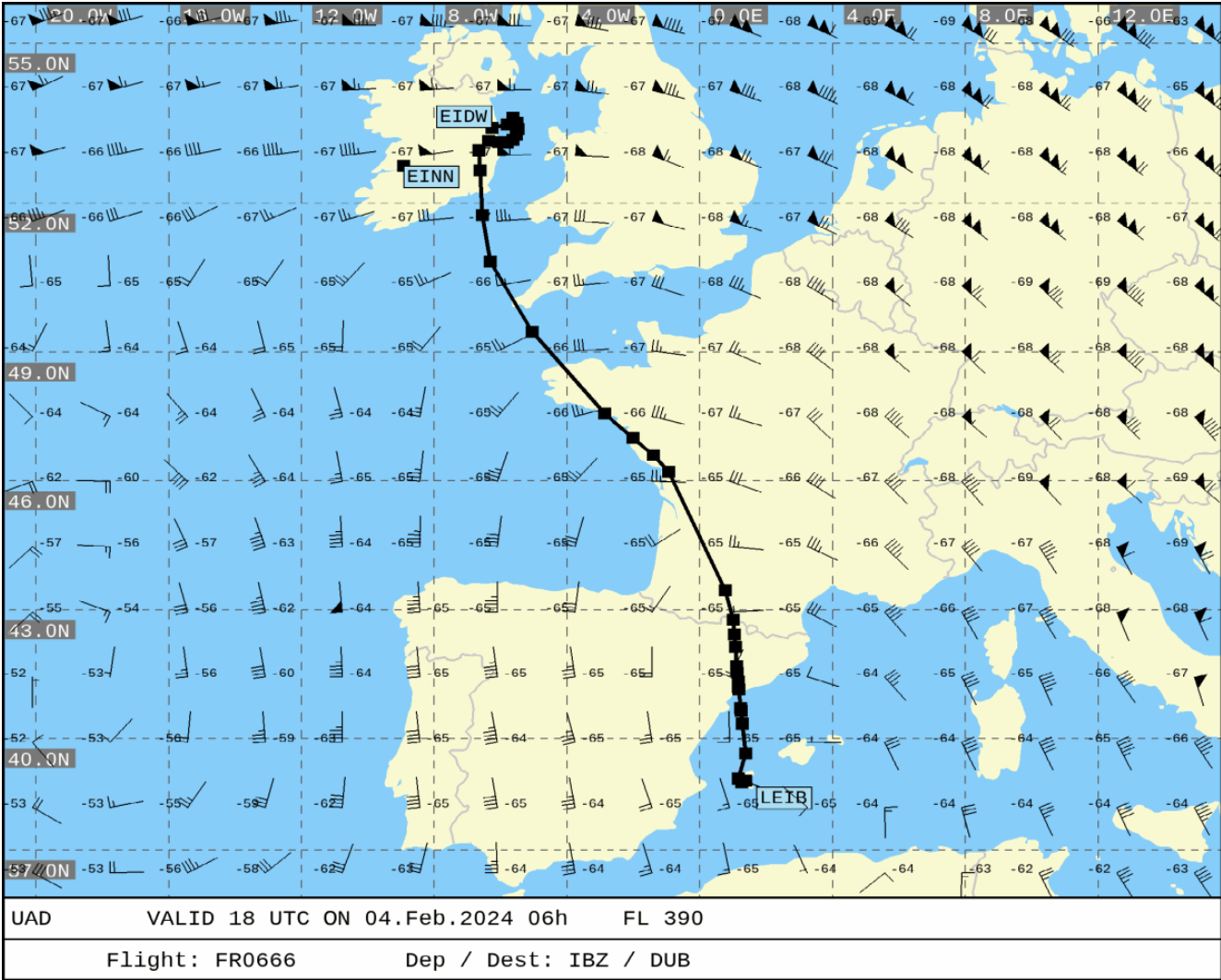


UAD 2 of 3



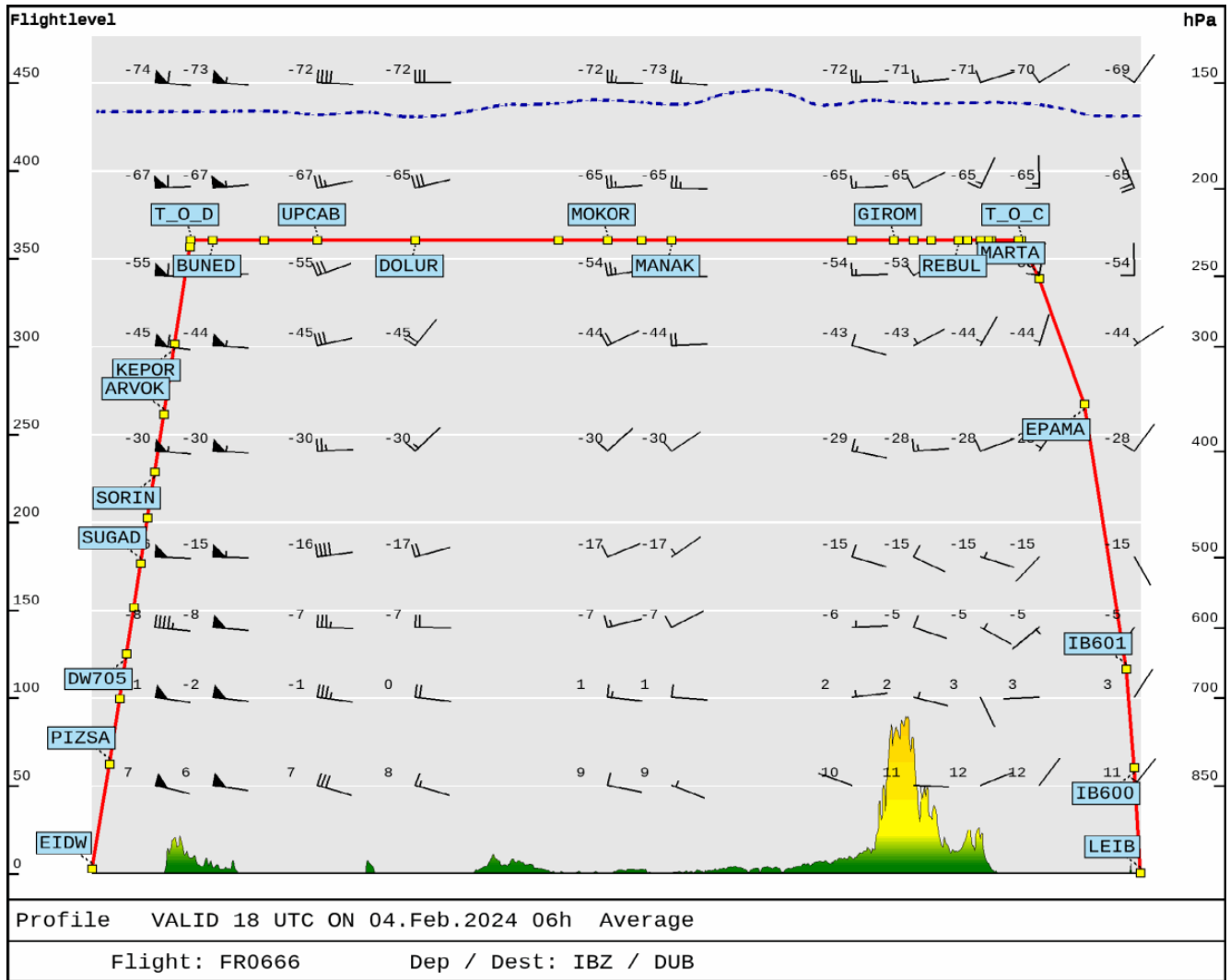


UAD 3 of 3





Vertical profile





Generated at 0016Z 05 February 2024
Briefing Summary

RYP666
IBZ - DUB
04 FEBRUARY 2024
EINI

CODESHARE FLIGHT NOS:

IBZ - DUB ETD 1300 STAND N/A NO SLOT TIME YET ALLOCATED

===== OPDEF INFORMATION FOR EINI =====
NO ITEMS

===== END OPDEF INFORMATION =====
===== MET AND AIS SUMMARY FOR DEP/ARR STATIONS =====

IBIZA (IBZ/LEIB)

06/2799m 24/2799m
SA050000Z AUTO 33004KT CAVOK 08/08 Q1031
FT042000Z 0421/0521 23004KT 9999 FEW015 TX17/0513Z TN08/0506Z
TEMPO 0421/0506 2000 BR BKN010

Airfield

///Feb 021150z-Mar 222359z
REF AIRAC SUP 170/23, PHASE 30 ACT
///Feb 011600z-Feb 290400z
UNMANNED ACFT FLYING WI 100M RADIUS
CENTRED OF COORD: 385551N 0012955E.
ROCA LLISA/IBIZA
F) SFC G) 00060M AGL
///Jan 312300z-Feb 090530z
REF AIRAC SUP 170/23 PHASE 12 ACT
TWY T FROM THE CENTRAL POINT OF TWY T UNTIL TWY E-2 E-3 CLSD IN NON
OPERATIONAL HOURS
-TWY T BETWEEN THE ACCESS SIGN TO PRKG 13 AND TWY E3 CLSD
-TWY E3 E4 AND E5 CLSD
-GATE G2 AND G3 CLSD
///Jan 290849z-Apr 251200z
REF AD 2-LEIB 8 ITEM 20. GROUND MOVEMENT.
- 2.1 APRON.
THE APRON IS MARKED BY MEANS OF THE APRON EDGE LINE AND THE
CONNECTION LINE BTN GATES G1 AND G2
///Jan 290846z-Apr 251200z
REF AD 2-LEIB 8 ITEM 20.2. GROUND MOVEMENT.
IN CASE THAT THERE IS A SITUATION ON THE APRON THAT BLOCKS THE
MOVEMENT DIRECTION DEFINED IN ITEM 2, THE ENTER/EXIT GATE TO APRON
WILL BE MODIFIED, TAKING INTO ACCOUNT THAT:
1) GATE G2 LIMITED TO ACFT UP TO 52M WINGSPAN
2) GATE G3 LIMITED TO ACFT UP TO 18M WINGSPAN, WITH NO POSSIBILITY
FOR HELICOPTERS TO TRANSIT THROUGH IT



---Jan 260330z-Feb 200600z
REF AIRAC SUP 170/23 PHASE 8 ACT
---Jan 251037z-Feb 292259z
ATC INDUSTRIAL ACTION CALL DURING ALL OPERATING HOURS + PPR: MINIMUM
SERVICES AVBL
---Jan 250000z-Feb 072359z
TRIGGER NOTAM - PERM AIRAC AIP AMDT 17/23 WEF 25-JAN-24
- TAXIING GUIDANCE SYSTEM AND MARKINGS.
- REMARKS TO APPROACH AND RUNWAY LIGHTING.
- CHANGE OF FREQUENCIES DUE TO 8.33 CHANNEL IN
ALL RELEVANT PAGES AND CHARTS.
- IAC 1/3/4/5 CHARTS: AREA LETR67L INDICATOR.
---Jan 242315z-Mar 302359z
REF AIRAC SUP 170/23, PHASE 16 ACT
---Jan 121523z-Mar 010600z
REF AIRAC SUP 170/23, PHASE 2 ACT
---Jan 070950z-UFN
ACFT STAND 25 LTD TO EXIT BY TOWED PUSH-BACK MANDATORY
---Jan 070946z-UFN
ACFT STAND 27 LTD TO EXIT BY TOWED PUSH-BACK MANDATORY
---Jan 070944z-UFN
ACFT STAND 28 LTD TO EXIT BY TOWED PUSH-BACK MANDATORY
---Jan 032300z-UFN
OBST (FLOODLIGHT POLE 10) ERECTED ON COORD 385222.7N 0012149.7E. MAX
HGT 20M AGL
---Jan 032300z-UFN
OBST (FLOODLIGHTING POLE 11) ERECTED ON COORD 385218.6N 0012150.4E.
MAX HGT 10M AGL
---Dec 112300z-Feb 150600z
REF AIRAC SUP 170/23, PHASE 25 ACT

Runway

---Jan 260630z-Mar 300600z
REF AIRAC SUP 170/23, PHASE 3 ACT
---Jan 250000z-Feb 072359z
TRIGGER NOTAM - AIP SUP 14/24 WEF 25-JAN-24 TO 25-JAN-25 EST:
TWY EH CLOSED
---Dec 181200z-Feb 150600z
PAPI RWY 24 LEFT WING U/S

Approach/Departure

---Jan 250000z-UFN
REF AD 2-LEIB IAC/1.1, ILS Z RWY 06, IAC/3.1, ILS XRWY 06, IAC/4.1,
LOC RWY 06 AND IAC/5.1, VOR RWY 06 (WEF 25-JAN-24
AIRAC AMDT 17/23), MODIFY:
-WHERE IT SAYS: LETR67L
-IT MUST SAY: LETR68L

DUBLIN INTL (DUB/EIDW)

34/2072m 16/2072m 28L/2637m 10R/2637m



28R/3109m 10L/3109m
SA050000Z 24014G26KT 190V280 9999 BKN021 11/06 Q1019 NOSIG
FT042300Z 0500/0524 25015G26KT 9999 SCT020 BKN025
PROB40 TEMPO 0511/0517 25020G35KT -DZ BKN012

Airfield

///Feb 050045z-Feb 050300z
APRON TWY 1 AND APRON TWY 2 CLOSED
///Jan 292250z-Apr 282000z
THROUGH TAXIING NOT PERMITTED ON TWY F-OUTER TO/FROM
APRON TWY 1 THROUGH LINK 5
REF AIP SUPPLEMENT 009/2023
///Jan 291614z-Apr 102330z
THROUGH TAXIING NOT PERMITTED BETWEEN TWY M1 AND TWY F INNER
---Jan 181738z-Apr 181730z
WOLFTRAP DME WTP FREQUENCY 116.3MHZ CH110X H24 U/S
---Jan 181117z-UFN
DAILY 0700-1900
OBSTACLE, TEMPORARY MOBILE CRANE, VANTAGE BUSINESS PARK DUBLIN 11.
POSITION 532459.9N 0061913.1W WITHIN A RADIUS OF 80M
ELEVATION 393FT AMSL
OBSTACLE LIGHTED
---Jan 112330z-Apr 102330z
THROUGH TAXIING NOT PERMITTED ON TWY F-INNER TO/FROM LINK 4 TO ABEAM
STAND 119C
REF AIP SUPPLEMENT 009/2023
---Jan 112330z-Apr 102330z
THROUGH TAXIING NOT PERMITTED FROM APRON TWY 1 TO/FROM TWY F-INNER
REF AIP SUPPLEMENT 009/2023
---Jan 112330z-Apr 102330z
THROUGH TAXIING NOT PERMITTED BETWEEN TWY P1 AND APRON TWY 1 THROUGH
LINK 5
REF AIP SUPPLEMENT 009/2023
---Jan 041748z-UFN
AUTOMATIC TERMINAL INFORMATION SERVICE (ATIS) DUBLIN INFORMATION
DEPARTURE FREQ 129.640MHZ U/S
REF AIP EIDW AD 2.18 ATS COMMUNICATION FACILITIES
---Dec 131240z-UFN
EIDW ILS RDH PUBLISHED INCORRECTLY ON CHART
PUBLISHED AS ILS RDH 54
SHOULD READ ILS RDH 50
REF AIP EIDW AD 2.24-39.1 MINIMA TABLE
---Dec 111035z-UFN
TWY E2 CLOSED
---Dec 110955z-UFN
TWY A CLOSED
---Dec 110946z-UFN
TAXIWAY Z CLOSED
REF AIP SUPPLEMENT 027/2022
---Dec 051350z-UFN
RWY 10L STRAIGHT-IN APPROACH ILS CAT II INSTRUMENT APPROACH MINIMA
NOT AVAILABLE.
REF: EIDW AD 2.24-33.1



---Dec 051348z-UFN

RWY 28R STRAIGHT-IN APPROACH ILS CAT II INSTRUMENT APPROACH MINIMA NOT AVAILABLE.

EIDW AD 2.24-30.1

---Nov 151645z-Feb 151600z

POTENTIAL B787 RADIO ALTIMETER INTERFERENCE AT DUBLIN AIRPORT. THERE HAVE BEEN A NUMBER OF RECENT REPORTED EVENTS AT DUBLIN AIRPORT WHEREBY THE RADIO ALTIMETER SYSTEMS ON CERTAIN B787 AIRCRAFT MAY HAVE BEEN SUBJECT TO EXTERNAL RADIO FREQUENCY INTERFERENCE. TESTING AND INVESTIGATION ARE CURRENTLY TAKING PLACE AT DUBLIN AIRPORT TO IDENTIFY IF AN EXTERNAL SOURCE IS POTENTIALLY CAUSING THIS RADIO FREQUENCY INTERFERENCE.

FLIGHT CREWS OPERATING B787 AIRCRAFT INTO DUBLIN AIRPORT ARE ADVISED TO CONSIDER THE EFFECTS OF DEGRADED RADIO ALTIMETER FUNCTIONALITY AND ANOMALOUS RADIO ALTIMETER BEHAVIOUR DURING THE APPROACH AND LANDING PHASES OF A FLIGHT.

THE FAA, EASA AND BOEING HAVE ISSUED INFORMATION BULLETINS ON RADIO FREQUENCY INTERFERENCE EFFECTS ON RADIO ALTIMETERS
FLIGHT CREWS SHOULD CONTINUE TO REPORT ANY ISSUES IN LINE WITH THE REQUIREMENTS OF REGULATION (EU) 376/2014 REPORTING, ANALYSIS AND FOLLOW-UP OF OCCURRENCES IN CIVIL AVIATION

---Nov 091158z-UFN

WORKS ON GOING INCLUDING RESTRICTIONS TO AIRCRAFT MOVEMENTS
TRIGGERING SUPPLEMENT 024/2022

---Oct 021747z-UFN

HOLDING PROCEDURE CHANGED. RATE OF DESCENT IN HOLDING PATTERNS AMENDED TO: A STANDARD RATE OF DESCENT OF 1000FT PER MIN IN HOLDING PATTERNS WILL BE USED UNLESS OTHERWISE INSTRUCTED BY ATC. PILOTS MUST ADVISE ATC IF UNABLE TO COMPLY WITH THE STANDARD RATE OF DESCENT.
REF AIP EIDW AD 2.22 SECTION 8

Runway

///Feb 021730z-May 011700z

RWY 28R AVAILABLE FOR DEPARTURES ONLY DURING OPERATIONAL HOURS

Approach/Departure

---Jan 241617z-UFN

NEW END DATE TO SUP 016/2023, EIDW - POINT MERGE FUELLING STARS
WITHDRAWAL: EXTENDED UNTIL 21 MAR 2024.
REF AIP IRELAND ENR 1.10 FLIGHT PLANNING PARA 7, EIDW AD 2.24-22.4,
EIDW AD 2.24-23.5.

---Jan 160724z-UFN

STANDARD ARRIVAL CHART - INSTRUMENT RNAV RWY 10L/R (WITHOUT LATERAL HOLDING/POINT MERGE) - LEVEL CONSTRAINTS AMENDED.

BAGSO 2Z - LEVEL RESTRICTION AT BAGSO PUBLISHED AT OR BELOW FL100
SHOULD READ AT OR BELOW FL240.

BOYNE 2Z - LEVEL RESTRICTION AT BOYNE PUBLISHED AT OR BELOW FL100
SHOULD READ AT OR BELOW FL240.

LIPGO 2Z - LEVEL RESTRICTION AT LIPGO PUBLISHED AT OR BELOW FL100
SHOULD READ AT OR BELOW FL240.

VATRY 2Z - LEVEL RESTRICTION AT VATRY PUBLISHED AT OR BELOW FL230
SHOULD READ AT OR BELOW FL240.



NIMAT 2Z - LEVEL RESTRICTION AT NIMAT PUBLISHED AT OR BELOW FL230
SHOULD READ AT OR BELOW FL240.

REF AIP EIDW AD 2.24-23.5

---Jan 160724z-UFN

STANDARD ARRIVAL CHART - INSTRUMENT RNAV RWY 10L/R (WITH LATERAL
HOLDING/POINT MERGE) - LEVEL CONSTRAINTS AMENDED.

BAGSO 2R - LEVEL RESTRICTION AT BAGSO PUBLISHED AT OR BELOW FL100
SHOULD READ AT OR BELOW FL240.

BOYNE 2R - LEVEL RESTRICTION AT BOYNE PUBLISHED AT OR BELOW FL100
SHOULD READ AT OR BELOW FL240.

LIPGO 2R - LEVEL RESTRICTION AT LIPGO PUBLISHED AT OR BELOW FL100
SHOULD READ AT OR BELOW FL240.

VATRY 2R - LEVEL RESTRICTION AT VATRY PUBLISHED AT OR BELOW FL230
SHOULD READ AT OR BELOW FL240.

NIMAT 2R - LEVEL RESTRICTION AT NIMAT PUBLISHED AT OR BELOW FL230
SHOULD READ AT OR BELOW FL240.

REF AIP EIDW AD 2.24-23.1

---Jan 160723z-UFN

STANDARD ARRIVAL CHART - INSTRUMENT RNAV RWY 28L/R (WITHOUT LATERAL
HOLDING/POINT MERGE) - LEVEL CONSTRAINTS AMENDED.

OLAPO 3X - LEVEL RESTRICTION AT OLAPO PUBLISHED AT OR BELOW FL160
SHOULD READ AT OR BELOW FL230.

VATRY 3X - LEVEL RESTRICTION AT VATRY PUBLISHED AT OR BELOW FL230
SHOULD READ AT OR BELOW FL240.

BUNED 3X - LEVEL RESTRICTION AT BUNED PUBLISHED AT OR BELOW FL190
SHOULD READ AT OR BELOW FL230.

SUTEX 3X - LEVEL RESTRICTION AT SUTEX PUBLISHED AT OR BELOW FL160
SHOULD READ AT OR BELOW FL230.

OSGAR 3X - LEVEL RESTRICTION AT OSGAR PUBLISHED AT OR BELOW FL160
SHOULD READ AT OR BELOW FL230.

NIMAT 3X - LEVEL RESTRICTION AT NIMAT PUBLISHED AT OR BELOW FL160
SHOULD READ AT OR BELOW FL240.

REF AIP EIDW AD 2.24-22.4

---Jan 160723z-UFN

STANDARD ARRIVAL CHART - INSTRUMENT RNAV RWY 28L/R (WITH LATERAL
HOLDING/POINT MERGE) - LEVEL CONSTRAINTS AMENDED.

OLAPO 3L - LEVEL RESTRICTION AT OLAPO PUBLISHED AT OR BELOW FL160
SHOULD READ AT OR BELOW FL230.

VATRY 3L - LEVEL RESTRICTION AT VATRY PUBLISHED AT OR BELOW FL230
SHOULD READ AT OR BELOW FL240.

BUNED 3L - LEVEL RESTRICTION AT BUNED PUBLISHED AT OR BELOW FL190
SHOULD READ AT OR BELOW FL230.

SUTEX 3L - LEVEL RESTRICTION AT SUTEX PUBLISHED AT OR BELOW FL160
SHOULD READ AT OR BELOW FL230.

OSGAR 3L - LEVEL RESTRICTION AT OSGAR PUBLISHED AT OR BELOW FL160
SHOULD READ AT OR BELOW FL230.

NIMAT 3L - LEVEL RESTRICTION AT NIMAT PUBLISHED AT OR BELOW FL230
SHOULD READ AT OR BELOW FL240.

REF AIP EIDW AD 2.24-22.1

---Jan 081504z-UFN

INSTRUMENT APPROACH PROCEDURES FOR NON-RNAV 1 EQUIPPED/CAPABLE
AIRCRAFT FOR RUNWAYS 28R AND 10L NOT AVAILABLE,

REF AIP EIDW AD 2.22 FLIGHT PROCEDURES, SECTION 2.3 AND 2.4

---Dec 181009z-UFN



RWY 28L VOR-T IAP NOT AVAILABLE
EIDW AD 2.24-45
---Dec 181004z-UFN
VISUAL APPROACHES RWY28R AND RWY10L NOT AVAILABLE
REF EIDW AD 2.22 PARA 10.7
---Nov 080902z-UFN
INSTRUMENT APPROACH PROCEDURES NOT AVAILABLE ON CHARTS VOR RWY 28L
AND RWY 10R
REF EIDW AD 2.24-28.1
REF EIDW AD 2.24-37.1
---Oct 311403z-UFN
VFR ROUTE TO EIWT
VFR ROUTE CONTINUES TO BE AVAILABLE FOR USE. WST DVOR/DME CANNOT BE
USED FOR NAVIGATION PURPOSES.
REF NOTAM B0838/23
REF AIP EIDW AD 2.24-44
---Aug 241424z-UFN
ILS GP RWY 16 HAS A RDH OF 50FT
REF AIP EIDW AD 2.19 REMARKS TABLE

===== END MET AND AIS SUMMARY FOR DEP/ARR STATIONS =====
===== TAKE OFF ALTERNATE =====

NO TAKE OFF ALTERNATE REQUIRED

===== END TAKE OFF ALTERNATE =====
===== DESTINATION ALTERNATES =====

SHANNON INTL (SNN/EINN)

06/3199m 24/3199m
SA050000Z 24013KT 9999 OVC020 10/08 Q1022 NOSIG
FT042300Z 0500/0524 23014KT 9999 SCT012 BKN020
PROB40 TEMPO 0500/0524 -DZ BKN010
TEMPO 0511/0524 24022G32KT

Airfield

---Oct 021807z-UFN
HOLDING PROCEDURE CHANGED. RATE OF DESCENT IN HOLDING PATTERNS
AMENDED TO: A STANDARD RATE OF DESCENT OF 1000FT PER MIN IN HOLDING
PATTERNS WILL BE USED UNLESS OTHERWISE INSTRUCTED BY ATC. PILOTS MUST
ADVISE ATC IF UNABLE TO COMPLY WITH THE STANDARD RATE OF DESCENT.
REF AIP EINN AD 2.22 SECTION 9

Approach/Departure

---Nov 291140z-UFN
SID DIGAN3A
SID TOMTO3A NOT AVAILABLE
REF EINN AD 2.24-5.1

===== END DESTINATION ALTERNATES =====



===== ENROUTE FUEL ALTERNATE =====

NO ENROUTE FUEL ALTERNATE REQUIRED

===== END ENROUTE FUEL ALTERNATE =====

===== ETOPS ALTERNATES =====

NO ETOPS ALTERNATES REQUIRED

===== END ETOPS ALTERNATES =====

===== ENROUTE AIRSPACES =====

BARCELONA FIR/UIR (LECB)

NO RECENT SIGMET

FIR/UIR

///Feb 030000z-UFN

RCC PALMA SERVICE COORDINATOR AVBL H24 ONLY FM MON TO SAT (NOT HOL)
AS FOLLOWS:

V (SUMMER HR): FM MON HR 0530 TO SAT HR 0530

I (WINTER HR): FM MON HR 0630 TO SAT HR 0630

DURING THE REST OF THE TIME THE SERVICE COORDINATOR WILL HAVE
A REACTION TIME OF ONE HOUR, IN THIS REACTION PERIOD THE SERVICE WILL
BE ASSUMED BY THE RCC MADRID SERVICE COORDINATOR.

///Feb 010630z-Mar 310630z

ECAO (OPERATIVE AIR TRAFFIC SQUADRON) BARCELONA (BARCELONA
MILITARY),

FROM 01/02/24 TO 31/03/24 EST FM 18:30 TIL 06:30, WILL ONLY PROVIDE
ATS OAT SERVICE TO TRAFFIC THAT FILL OUT THEIR FLIGHT PLAN BEFORE
16:00 AND SEND COORDINATION TO
SALACONTROL-ECAO BARCELONA(AT)EA.MDE.ES.

///Jan 291240z-UFN

REF ENR 6.2-1 ATC-ICAO MINIMUM SURVEILLANCE ALTITUDE CHART
- INCREASE SECTOR ALTITUDE 1700FT FROM THE CHART UP TO THE VALUE
1800FT

---Jan 250000z-Feb 072359z

TRIGGER NOTAM - AIP SUP AIRAC 202/23 WEF 25-JAN-24 TO 25-JAN-25 EST:
INSTALLATION OF A METEOROLOGICAL TOWER EL CALVARI 1.

---Jan 250000z-Feb 072359z

TRIGGER NOTAM - AIP SUP 06/24 WEF 25-JAN-24 TO 21-APR-24 EST: RADIO
COVERAGE INCIDENT IN LELC CTA.

---Nov 300000z-UFN

REF ENR 2.1-22 (AIRAC 15/23 WEF 30-NOV-23), MODIFY:

-TMA VALENCIA ATS UNITS:

ADD: ATS UNIT: VALENCIA TACC, CALL SIGN: VALENCIA CONTROL,
FREQ: SEE ITEM 2.2.

---Nov 300000z-UFN

REF ENR 2.1-19 (AIRAC 15/23 WEF 30-NOV-23), MODIFY LATERAL
LIMITS TVAL-9:

-WHERE IT SAYS: 390539.3N 0003425.0E

-IT MUST SAY: 390539.3N 0003425.0W



---Nov 300000z-UFN

REF ENR 6.8-8 (WEF 30-NOV-23 AMDT AIRAC 15/23), MODIFY:

-WHERE IT SAYS: AREA 1 AND AREA 2

-IT MUST SAY: TMA VALENCIA.

---Nov 161521z-Feb 162300z

IN ACCORDANCE WITH COUNCIL DECISION (CFSP) 2021/908 , PERMISSION TO LAND IN, TAKE-OFF FROM OR OVERFLY THE TERRITORY OF SPAIN SHALL BE DENIED TO ANY AIRCRAFT OPERATED BY BELARUSIAN AIR CARRIERS, INCLUDING AS A MARKETING CARRIER IN CODE-SHARING OR BLOCKED-SPACE ARRANGEMENTS. PREVIOUS PARAGRAPH SHALL NOT APPLY IN THE CASE OF AN EMERGENCY LANDING OR AN EMERGENCY OVERFLIGHT. SPANISH AUTHORITIES MAY DETERMINE NOT APPLICABILITY OF THE PARAGRAPH ABOVE WHEN A LANDING, TAKE-OFF OR OVERFLIGHT IS REQUIRED FOR HUMANITARIAN PURPOSES OR ANY OTHER PURPOSES.

---Nov 161521z-Feb 162300z

MILITARY INVASION OF UKRAINE BY RUSSIAN FEDERATION:

ALL AIRCRAFT OWNED, CHARTERED OR OPERATED OR OTHERWISE CONTROLLED BY CITIZENS OF THE RUSSIAN FEDERATION AND ALL OPERATORS HOLDING AIR OPERATOR CERTIFICATE (AOC) ISSUED BY THE RUSSIAN FEDERATION AUTHORITIES ARE PROHIBITED TO ENTER, EXIT OR OVERFLY SPANISH AIRSPACE EXCEPT HUMANITARIAN, SAR AND LEASED AIRCRAFT ONE-WAY RETURN FLIGHTS WITH THE PERMISSION OF THE APPROPRIATE SPANISH AUTHORITIES AND IN CASE OF EMERGENCY LANDING OR EMERGENCY OVERFLIGHT. REQUESTS FOR HUMANITARIAN FLIGHTS SHALL BE SENT TO THE CONCERNED SPANISH AIRPORT OPERATOR.

Restricted Airspace

///Feb 050000z-Feb 262359z

TEMPORARY SEGREGATED AREA FOR UNMANNED AIRCRAFT VEHICLE
FLYING ACTIVATED WI 414102N 0011633E, 414013N 0011727E,
414449N 0012114E, 414739N 0012703E 415128N 0011817E,
414528N 0011650E, 414232N 0011633E, 414101N 0011634E,
414102N 0011633E.

LERIDA/CERVERA

COORDINATION PHONE NUMBER: +34 637 347 056.

F) SFC G) 00150M AGL

///Feb 050000z-Feb 262359z

TEMPORARY SEGREGATED AREA FOR UNMANNED AIRCRAFT VEHICLE
FLYING ACTIVATED WI 413605N 0023736E, 413440N 0023304E,
413205N 0024003E, 413256N 0024033E, 413605N 0023736E. BARCELONA/SANT
POL DE MAR

RMK: COORDINATION PHONE NUMBER: +34 637 347 056.

F) SFC G) 00150M AGL

///Feb 042300z-Feb 232259z

TEMPORARY SEGREGATED AREA FOR UNMANNED AIRCRAFT VEHICLE
FLYING ACTIVATED WI 413425N 0021232E, 413307N 0021325E,
413302N 0021239E, 413418N 0021213E, 413425N 0021232E.

BARCELONA/MOLLET DEL VALLES

COORDINATION PHONE NUMBER: 637 347 056.

COORDINATION MAIL: MOSSOS.UDRON (AT)GENCAT.CAT

F) SFC G) 00120M AGL

///Feb 020600z-Feb 261400z

02 05 09 12 16 19 23 26 0600-1400



TEMPORARY SEGREGATED AREA FOR UNMANNED AIRCRAFT VEHICLE
FLYING ACTIVATED WI 393746N 0002836W, 393731N 0002853W,
393808N 0002927W, 393832N 0002905W, 393746N 0002836W
VALENCIA/EL MOJON 1
RMK: THE ACTIVATION/DEACTIVATION OF THIS AREA WILL BE CARRIED OUT IN
REAL TIME BY TACTICAL COORDINATION WITH ECAO (OPERATIVE
AIR TRAFFIC SQUADRON) BARCELONA.
F) SFC G) 00550FT AMSL
///Feb 020600z-Feb 261400z
02 05 09 12 16 19 23 26 0600-1400
TEMPORARY SEGREGATED AREA FOR UNMANNED AIRCRAFT VEHICLE
FLYING ACTIVATED WI 393848N 0003004W, 393902N 0002935W,
393851N 0002847W, 393808N 0002927W, 393848N 0003004W,
VALENCIA/EL MOJON 3
RMK: THE ACTIVATION/DEACTIVATION OF THIS AREA WILL BE CARRIED OUT IN
REAL TIME BY TACTICAL COORDINATION WITH ECAO (OPERATIVE
AIR TRAFFIC SQUADRON) BARCELONA.
F) SFC G) 00550FT AMSL
///Feb 020600z-Feb 261400z
02 05 09 12 16 19 23 26 0600-1400
TEMPORARY SEGREGATED AREA FOR UNMANNED AIRCRAFT VEHICLE
FLYING ACTIVATED WI 393851N 0002847W, 393843N 0002821W,
393818N 0002816W, 393802N 0002806W, 393746N 0002804W,
393746N 0002836W, 393832N 0002905W, 393851N 0002847W
VALENCIA/EL MOJON 2
RMK: THE ACTIVATION/DEACTIVATION OF THIS AREA WILL BE CARRIED OUT IN
REAL TIME BY TACTICAL COORDINATION WITH ECAO (OPERATIVE
AIR TRAFFIC SQUADRON) BARCELONA.
F) SFC G) 00550FT AMSL
///Feb 010800z-Feb 291749z
0800-SS
AEROBATICS WI 03NM RADIUS OF 420121N 0002847E
HUESCA/BENABARRE
F) SFC G) 06000FT AMSL
///Feb 010800z-Feb 291700z
0800-1700
UNMANNED AIRCRAFT VEHICLE FLYING
WI 02KM RADIUS OF 410025N 0002245W
TERUEL/ANDORRA
F) SFC G) 00100M AGL
///Feb 010711z-Feb 291753z
SR-SS
AIR EXERCISES OF FREE FLIGHT OF PARAGLIDERS, PARAMOTORS AND
HANG GLIDERS WI 422342N 0004433W, 421655N 0000434W,
420938N 0000458W, 421850N 0004506W, 422342N 0004433W EXC LEHC FIZ
HUESCA/EMBALSE DE LA PENA
F) SFC G) 05740FT AMSL
///Feb 010704z-Feb 291745z
01-02 05-09 12-16 19-23 26-29 SR-SS
LETS31 ACTIVATED FOR UNMANNED AIRCRAFT VEHICLES FLYING
F) SFC G) 04500FT AMSL
///Jan 310600z-Feb 062200z
TEMPORARY SEGREGATED AREAS FOR UNMANNED AIRCRAFT VEHICLES
FLYING ACTIVATED AS FOLLOWS:



THE ACTIVATION/DEACTIVATION OF THESE AREAS WILL BE CARRIED OUT IN REAL TIME BY TACTICAL COORDINATION WITH THE APPROPRIATE ECAO (OPERATIVE AIR TRAFFIC SQUADRON) OR APP IN EACH AREA.

SEGREGATED AREAS:

TSA TALAVERA LOW 1

LATERAL LIMITS: CIRCLE OF 08NM RADIUS CENTRED ON
385329N 0064917W.

VERTICAL LIMITS: SFC/5000FT AMSL

DATES AND TIMES: JAN 31 HR 0600-0700 1930-2200

FEB 05-06 HR 0600-0700 1930-2200

RMK: EXCEPTED FLT (EMERGENCY SITUATIONS) MUST COORDINATE WITH ATC UNIT APPROPRIATE PROCEDURE, IF DEACTIVATION IS NOT FEASIBLE BEFORE ENTERING THE AREA.

RMK: ANY FLT INTERESTED IN USING AFFECTED AIRSPACE MUST CONTACT WITH TALAVERA APP/TWR IN ORDER TO UPDATE ACTIVATION STATUS.

TSA TALAVERA LOW 1 NORTH

LATERAL LIMITS: 385658N 0065446W, 385036N 0064303W,

FROM THIS POINT FOLLOWING AN ARC OF 5,9NM

RADIUS CENTRED ON 385329N 0064917W

COUNTER CLOCKWISE UP TO 385658N 0065446W.

VERTICAL LIMITS: SFC/2500FT AMSL

LATERAL LIMITS: 385821N 0065723W, 384911N 0064030W,

FROM THIS POINT FOLLOWING AN ARC OF 08NM

RADIUS CENTRED ON 385329N 0064917W

COUNTER CLOCKWISE UP TO 385821N 0065723W.

END PART 1 OF 12

RMK: ANY FLT INTERESTED IN USING AFFECTED AIRSPACE MUST CONTACT WITH TALAVERA APP/TWR IN ORDER TO UPDATE ACTIVATION STATUS.

TSA TALAVERA LOW 1 AUTOMATICO

LATERAL LIMITS: CIRCLE OF 08NM RADIUS CENTRED ON
385329N 0064917W.

VERTICAL LIMITS: SFC/5000FT AMSL

DATES AND TIMES: JAN 31 HR 0600-0700 1930-2200

FEB 05-06 HR 0600-0700 1930-2200

RMK: EXCEPTED FLT (EMERGENCY SITUATIONS) MUST COORDINATE WITH ATC UNIT APPROPRIATE PROCEDURE, IF DEACTIVATION IS NOT FEASIBLE BEFORE ENTERING THE AREA.

RMK: ANY FLT INTERESTED IN USING AFFECTED AIRSPACE MUST CONTACT WITH TALAVERA APP/TWR IN ORDER TO UPDATE ACTIVATION STATUS.

TSA TALAVERA LOW 2

LATERAL LIMITS: CIRCLE OF 08NM RADIUS CENTRED ON
385329N 0064917W.

VERTICAL LIMITS: 4000FT AMSL/FL080

DATES AND TIMES: JAN 31 HR 0600-0700 1930-2200

FEB 05-06 HR 0600-0700 1930-2200

RMK: EXCEPTED FLT (EMERGENCY SITUATIONS) MUST COORDINATE WITH ATC UNIT APPROPRIATE PROCEDURE, IF DEACTIVATION IS NOT FEASIBLE BEFORE ENTERING THE AREA.

RMK: ANY FLT INTERESTED IN USING AFFECTED AIRSPACE MUST CONTACT WITH TALAVERA APP/TWR IN ORDER TO UPDATE ACTIVATION STATUS.

TSA TALAVERA HIGH

LATERAL LIMITS: 391229N 0064931W, 390454N 0062537W,
383332N 0064905W, 384300N 0070639W,



391229N 0064931W.
END PART 3 OF 12

VERTICAL LIMITS: 7000FT AMSL/FL140
DATES AND TIMES: JAN 31 HR 0600-0700 1930-2200
FEB 05-06 HR 0600-0700 1930-2200
RMK: ANY FLT INTERESTED IN USING AFFECTED AIRSPACE MUST CONTACT
WITH TALAVERA APP/TWR IN ORDER TO UPDATE ACTIVATION STATUS.
TSA LAST SIX

LATERAL LIMITS: CIRCLE OF 6.5NM RADIUS CENTRED ON
390120N 0064400W.

VERTICAL LIMITS: SFC/FL260
DATES AND TIMES: JAN 31 HR 0600-0700 1930-2200
FEB 05-06 HR 0600-0700 1930-2200
RMK: ANY FLT INTERESTED IN USING AFFECTED AIRSPACE MUST CONTACT
WITH TALAVERA APP/TWR IN ORDER TO UPDATE ACTIVATION STATUS.
TSA SECTOR 6 LOW

LATERAL LIMITS: 390950N 0070136W, 391925N 0063824W,
385242N 0064851W, 390950N 0070136W.

VERTICAL LIMITS: FL120/FL150
DATES AND TIMES: JAN 31 HR 0600-0700 1930-2200
FEB 05-06 HR 0600-0700 1930-2200
RMK: ANY FLT INTERESTED IN USING AFFECTED AIRSPACE MUST CONTACT
WITH TALAVERA APP/TWR IN ORDER TO UPDATE ACTIVATION STATUS.
TSA SECTOR 6 HIGH

LATERAL LIMITS: 390950N 0070136W, 391925N 0063824W,
385242N 0064851W, 390950N 0070136W.

VERTICAL LIMITS: FL140/FL350
DATES AND TIMES: JAN 31 HR 0600-0700 1930-2200
FEB 05-06 HR 0600-0700 1930-2200
RMK: ANY FLT INTERESTED IN USING AFFECTED AIRSPACE MUST CONTACT
WITH TALAVERA APP/TWR IN ORDER TO UPDATE ACTIVATION STATUS.
TSA RPA NORTH

END PART 4 OF 12

LATERAL LIMITS: 391006N 0070124W, 392626N 0061747W,
393055N 0055812W, 391503N 0054857W,
385307N 0064854W, 391006N 0070124W.

VERTICAL LIMITS: FL260/FL350
DATES AND TIMES: JAN 31 HR 0600-0700 1930-2200
FEB 05-06 HR 0600-0700 1930-2200
RMK: ANY FLT INTERESTED IN USING AFFECTED AIRSPACE MUST CONTACT WITH
TALAVERA APP/TWR IN ORDER TO UPDATE ACTIVATION STATUS.

TSA MERIDA NORTH

LATERAL LIMITS: 392622N 0061756W, 393055N 0055811W,
391044N 0054629W, 385810N 0062746W,
390422N 0063143W, 390731N 0063634W,
392622N 0061756W.

VERTICAL LIMITS: FL260/FL350
DATES AND TIMES: JAN 31 HR 0600-0700 1930-2200
FEB 05-06 HR 0600-0700 1930-2200
RMK: ANY FLT INTERESTED IN USING AFFECTED AIRSPACE MUST CONTACT
WITH TALAVERA APP/TWR IN ORDER TO UPDATE ACTIVATION STATUS.
TSA MERIDA SOUTH



LATERAL LIMITS: 391513N 0054932W, 390432N 0054040W,
384750N 0054719W, 385101N 0062654W,
385642N 0062716W, 390308N 0063100W
391513N 0054932W.
VERTICAL LIMITS: FL260/FL350
DATES AND TIMES: JAN 31 HR 0600-0700 1930-2200
FEB 05-06 HR 0600-0700 1930-2200
RMK: ANY FLT INTERESTED IN USING AFFECTED AIRSPACE MUST CONTACT
WITH TALAVERA APP/TWR IN ORDER TO UPDATE ACTIVATION STATUS.
TSA MILIS A
END PART 5 OF 12

LATERAL LIMITS: 385934N 0054938W, 385711N 0045503W,
384637N 0050041W, 384848N 0055348W,
385934N 0054938W.
VERTICAL LIMITS: FL245/FL275
DATES AND TIMES: JAN 31 HR 0600-2200
FEB 05-06 HR 0600-2200
RMK: THE AREA WILL BE PLANNABLE WITH ACTIVATION/DEACTIVATION BY
TACTICAL COORDINATION WITH THE APPROPRIATE ECAO (OPERATIVE
AIR TRAFFIC SQUADRON).
TSA MILIS B
LATERAL LIMITS: 385731N 0050149W, 385537N 0042353W,
384457N 0042526W, 384656N 0050727W,
385731N 0050149W.
VERTICAL LIMITS: FL245/FL275
DATES AND TIMES: JAN 31 HR 0600-2200
FEB 05-06 HR 0600-2200
RMK: THE AREA WILL BE PLANNABLE WITH ACTIVATION/DEACTIVATION BY
TACTICAL COORDINATION WITH THE APPROPRIATE ECAO (OPERATIVE
AIR TRAFFIC SQUADRON).
TSA MILIS C
LATERAL LIMITS: 385556N 0043015W, 385410N 0035812W,
384350N 0040348W, 384516N 0043155W,
385556N 0043015W.
VERTICAL LIMITS: FL245/FL275
DATES AND TIMES: JAN 31 HR 0600-2200
FEB 05-06 HR 0600-2200
RMK: THE AREA WILL BE PLANNABLE WITH ACTIVATION/DEACTIVATION BY
TACTICAL COORDINATION WITH THE APPROPRIATE ECAO (OPERATIVE
AIR TRAFFIC SQUADRON).
TSA MILIS D
END PART 6 OF 12

LATERAL LIMITS: 385434N 0040457W, 385245N 0033355W,
384214N 0033453W, 384412N 0041035W,
385434N 0040457W.
VERTICAL LIMITS: FL245/FL275
DATES AND TIMES: JAN 31 HR 0600-2200
FEB 05-06 HR 0600-2200
RMK: THE AREA WILL BE PLANNABLE WITH ACTIVATION/DEACTIVATION BY
TACTICAL COORDINATION WITH THE APPROPRIATE ECAO (OPERATIVE
AIR TRAFFIC SQUADRON).
TSA MILIS E



LATERAL LIMITS: 385308N 0034019W, 385046N 0030156W,
383953N 0025548W, 384235N 0034114W,
385308N 0034019W.
VERTICAL LIMITS: FL245/FL275
DATES AND TIMES: JAN 31 HR 0600-2200
FEB 05-06 HR 0600-2200
RMK: THE AREA WILL BE PLANNABLE WITH ACTIVATION/DEACTIVATION BY
TACTICAL COORDINATION WITH THE APPROPRIATE ECAO (OPERATIVE
AIR TRAFFIC SQUADRON).
TSA MURCIA A
LATERAL LIMITS: 384037N 0030312W, 385217N 0030947W,
383731N 0020535W, 383555N 0020258W,
382854N 0021417W, 383027N 0021707W,
384037N 0030312W.
VERTICAL LIMITS: FL245/FL275
DATES AND TIMES: JAN 31 HR 0600-2200
FEB 05-06 HR 0600-2200
RMK: THE AREA WILL BE PLANNABLE WITH ACTIVATION/DEACTIVATION BY
TACTICAL COORDINATION WITH THE APPROPRIATE ECAO (OPERATIVE
END PART 7 OF 12

AIR TRAFFIC SQUADRON).

TSA MURCIA B
LATERAL LIMITS: 383125N 0022052W, 383831N 0020919W,
383731N 0020535W, 382655N 0014838W,
382052N 0015911W, 383027N 0021707W,
383125N 0022052W.
VERTICAL LIMITS: FL210/FL260
DATES AND TIMES: JAN 31 HR 0600-2200
FEB 05-06 HR 0600-2200
RMK: THE AREA WILL BE PLANNABLE WITH ACTIVATION/DEACTIVATION BY
TACTICAL COORDINATION WITH THE APPROPRIATE ECAO (OPERATIVE
AIR TRAFFIC SQUADRON).
TSA MURCIA C HIGH
LATERAL LIMITS: 382353N 0020447W, 383006N 0015345W,
381128N 0012251W, 380340N 0012756W,
382353N 0020447W.
VERTICAL LIMITS: FL245/FL260
DATES AND TIMES: JAN 31 HR 0630-1700
FEB 05-06 HR 0630-1700
RMK: THE AREA WILL BE PLANNABLE WITH ACTIVATION/DEACTIVATION BY
TACTICAL COORDINATION WITH THE APPROPRIATE ECAO (OPERATIVE
AIR TRAFFIC SQUADRON).
TSA MURCIA C LOW
LATERAL LIMITS: 382353N 0020447W, 383006N 0015345W,
381128N 0012251W, 380340N 0012756W,
382353N 0020447W.
VERTICAL LIMITS: FL180/FL230
DATES AND TIMES: JAN 31 HR 1400-2200
END PART 8 OF 12

FEB 05-06 HR 1400-2200

RMK: THE AREA WILL BE PLANNABLE WITH ACTIVATION/DEACTIVATION BY
TACTICAL COORDINATION WITH THE APPROPRIATE ECAO (OPERATIVE



AIR TRAFFIC SQUADRON).

TSA MURCIA D HIGH

LATERAL LIMITS: 380632N 0013309W, 381435N 0012800W,
375424N 0005435W, 374830N 0010033W,
380632N 0013309W.

VERTICAL LIMITS: FL245/FL260

DATES AND TIMES: FEB 06 HR 0630-1700

RMK: THE AREA WILL BE PLANNABLE WITH ACTIVATION/DEACTIVATION BY
TACTICAL COORDINATION WITH THE APPROPRIATE ECAO (OPERATIVE
AIR TRAFFIC SQUADRON).

TSA MURCIA D LOW

LATERAL LIMITS: 380632N 0013309W, 381435N 0012800W,
375424N 0005435W, 374830N 0010033W,
380632N 0013309W.

VERTICAL LIMITS: FL180/FL230

DATES AND TIMES: FEB 06 HR 1400-2200

RMK: THE AREA WILL BE PLANNABLE WITH ACTIVATION/DEACTIVATION BY
TACTICAL COORDINATION WITH THE APPROPRIATE ECAO (OPERATIVE
AIR TRAFFIC SQUADRON).

TSA PASILLO TOTANA HIGH

LATERAL LIMITS: 381803N 0014253W, 381010N 0012851W,
374626N 0013022W, 374628N 0014552W,
381803N 0014253W.

VERTICAL LIMITS: FL245/FL260

DATES AND TIMES: JAN 31 HR 0630-1700

RMK: THE AREA WILL BE PLANNABLE WITH ACTIVATION/DEACTIVATION BY END
PART 9 OF 12

TACTICAL COORDINATION WITH THE APPROPRIATE ECAO (OPERATIVE
AIR TRAFFIC SQUADRON).

TSA PASILLO TOTANA LOW

LATERAL LIMITS: 381803N 0014253W, 381010N 0012851W,
374626N 0013022W, 374628N 0014552W,
381803N 0014253W.

VERTICAL LIMITS: FL180/FL230

DATES AND TIMES: JAN 31 HR 1400-2200

RMK: THE AREA WILL BE PLANNABLE WITH ACTIVATION/DEACTIVATION BY
TACTICAL COORDINATION WITH THE APPROPRIATE ECAO (OPERATIVE
AIR TRAFFIC SQUADRON).

TSA LORCA HIGH

LATERAL LIMITS: 375126N 0015414W, 375127N 0012248W,
373223N 0012254W, 373227N 0015407W,
375126N 0015414W.

VERTICAL LIMITS: FL245/FL260

DATES AND TIMES: JAN 31 HR 0630-1700

TSA LORCA MEDIUM

LATERAL LIMITS: 375126N 0015414W, 375127N 0012248W,
373223N 0012254W, 373227N 0015407W,
375126N 0015414W.

VERTICAL LIMITS: FL190/FL270

DATES AND TIMES: JAN 31 HR 1400-1700

RMK: THE AREA WILL BE PLANNABLE WITH ACTIVATION/DEACTIVATION BY
TACTICAL COORDINATION WITH THE APPROPRIATE ECAO (OPERATIVE
AIR TRAFFIC SQUADRON).



TSA LORCA LOW

LATERAL LIMITS: 375126N 0015414W, 375127N 0012248W,
373223N 0012254W, 373227N 0015407W,
375126N 0015414W.
END PART 10 OF 12

VERTICAL LIMITS: FL180/FL200

DATES AND TIMES: JAN 31 HR 1400-1900

TSA CARAMULA HIGH

LATERAL LIMITS: 381232N 0021112W, 381221N 0015013W,
382249N 0015015W, 382240N 0011642W,
375228N 0011653W, 375225N 0014334W,
374626N 0014337W, 374624N 0021111W,
381232N 0021112W.

VERTICAL LIMITS: FL245/FL260

DATES AND TIMES: FEB 05 HR 0630-1700

TSA CARAMULA MEDIUM

LATERAL LIMITS: 381232N 0021112W, 381221N 0015013W,
382249N 0015015W, 382240N 0011642W,
375228N 0011653W, 375225N 0014334W,
374626N 0014337W, 374624N 0021111W,
381232N 0021112W.

VERTICAL LIMITS: FL190/FL270

DATES AND TIMES: FEB 05 HR 1400-1700

RMK: THE AREA WILL BE PLANNABLE WITH ACTIVATION/DEACTIVATION BY
TACTICAL COORDINATION WITH THE APPROPRIATE ECAO (OPERATIVE
AIR TRAFFIC SQUADRON).

TSA CARAMULA LOW

LATERAL LIMITS: 381232N 0021112W, 381221N 0015013W,
382249N 0015015W, 382240N 0011642W,
375228N 0011653W, 375225N 0014334W,
374626N 0014337W, 374624N 0021111W,
381232N 0021112W.

END PART 11 OF 12

VERTICAL LIMITS: FL180/FL200

DATES AND TIMES: FEB 05 HR 1400-1900

TSA ALCANTARILLA HIGH

LATERAL LIMITS: CIRCLE OF 7.5NM RADIUS CENTRED ON
375729N 0011326W.

VERTICAL LIMITS: FL245/FL260

DATES AND TIMES: FEB 06 HR 0630-1700

RMK: THE AREA WILL BE PLANNABLE WITH ACTIVATION/DEACTIVATION BY
TACTICAL COORDINATION WITH THE APPROPRIATE ECAO (OPERATIVE
AIR TRAFFIC SQUADRON).

TSA ALCANTARILLA MEDIUM

LATERAL LIMITS: CIRCLE OF 7.5NM RADIUS CENTRED ON
375729N 0011326W.

VERTICAL LIMITS: FL190/FL270

DATES AND TIMES: FEB 06 HR 1400-1700

RMK: THE AREA WILL BE PLANNABLE WITH ACTIVATION/DEACTIVATION BY
TACTICAL COORDINATION WITH THE APPROPRIATE ECAO (OPERATIVE
AIR TRAFFIC SQUADRON).

TSA ALCANTARILLA LOW



LATERAL LIMITS: CIRCLE OF 7.5NM RADIUS CENTRED ON
375729N 0011326W.
VERTICAL LIMITS: FL180/FL200
DATES AND TIMES: FEB 06 HR 1400-1900
F) SFC G) FL350
END PART 12 OF 12
///Jan 301100z-Mar 301400z
1100-1400
UNMANNED AIRCRAFT VEHICLE FLYING WI 380028N, 0011320W,
380029N, 0011317W, 380008N, 0011315W, 380004N, 0011341W,
380007N, 0011342W, 380011N, 0011323W, 380013N, 0011320W,
380028N, 0011320W.
MURCIA
F) SFC G) 00060M AGL
///Jan 300710z-Mar 261820z
JAN 30 SR-SS, FEB 06 13 20 27 SR-SS, MAR 05 12 19 26 SR-SS
TEMPORARY SEGREGATED AREA FOR UNMANNED AIRCRAFT
VEHICLE FLYING ACTIVATED WI 373000N 0011000W, 373000N 0003000W,
370000N 0003000W, 370000N 0011000W, 373000N 0011000W
MURCIA/CARTAGENA-MAR
F) SFC G) 00300M AMSL
---Jan 160440z-Feb 162002z
SR-SS
PJE WILL TAKE PLACE WI 5NM RADIUS CENTRED ON 414553N 0014905E RMK:
HIGHER ALTITUDES WILL BE AVAILABLE PRIOR COORDINATION IN REAL TIME
WITH LECB
MANRESA AD (BARCELONA)
F) SFC G) FL100
---Jan 070500z-Apr 061500z
0500-1500
UNMANNED AIRCRAFT VEHICLE FLYING WI 424441N 0005455E,
424552N 0005917E, 424604N 0010059E, 424048N 0010041E,
423936N 0010516E, 423845N 0010531E, 423841N 0005942E,
423917N 0005806E, 424219N 0005356E, 424441N 0005455E
LLEIDA/NAUT ARAN
F) SFC G) 00100M AGL
---Dec 250600z-Mar 222000z
0600-2000
UNMANNED ACFT VEHICLE FLYING WI 413044N 0015357E,
413021N 0015416E, 412913N 0015432E, 412912N 0015327E,
413029N 0015317E, 413044N 0015357E
BARCELONA/ABRERA
F) SFC G) 00100M AGL

Route

---Jan 250000z-Feb 072359z
TRIGGER NOTAM - AIP SUP AIRAC 204/23 WEF 25-JAN-24 TO 25-JAN-25 EST:
RESTRICTIONS TO VOR/DME ALT, LEAL IAC/8 AND AWY B46.

SHANNON FIR/UIR (EISN)



NO RECENT SIGMET

FIR/UIR

///Feb 011146z-UFN

OBSTACLE LIGHTS ON TURBINES 7 AT ARKLOW BANK OFFSHORE WINDFARM OUT
OF SERVICE CENTROID POSITION 524727N 0055648W
ELEVATION 124M/HEIGHT 406FT

///Feb 010945z-Feb 081200z

SHANWICK RADIO SATVOICE NUMBER 353(0)61 368241 IS OUT OF SERVICE. FOR
SATVOICE USE ACCESS CODE 425002 AS NORMAL, OR CALL 353(0)61 471199

///Jan 291700z-UFN

OBST LIGHTS U/S AT GALWAY WIND PARK POSN:532151.0516N 0092202.7984W

---Jan 250000z-Feb 082359z

TRIGGER NOTAM NIL AIRAC AMENDMENT FOR IRELAND
EFFECTIVE DATE 25 JAN 2024

---Dec 121814z-UFN

OBSTACLE LIGHT U/S AT ROSSLARE COMMS MAST, COUNTY WEXFORD
POSTION 521458.5816N 006202.7168W
HEIGHT 38M, ELEVATION 24.6M

---Nov 241401z-UFN

SHANNON FIR/UIR/SOTA/NOTA:
THE POINT NERTU IS NOT AVAILABLE FOR FLIGHTPLANNING.
REF AIP ENR 4.4

---Nov 220955z-UFN

OBSTACLE LIGHTS ON WIND TURBINE AT BEAL HILL WIND FARM, BALLYBUNION,
COUNTY KERRY OUT OF SERVICE. POSITION 523339.082N 0093738.442W. MAX
ELEVATION 180M AMSL.

---Nov 060927z-UFN

OBSTACLE LIGHT ON MET MAST AT OWENINNY BOG, SHANVODINNAUN,
COUNTY MAYO OUT OF SERVICE, POSITION 540826.38N 0092822.11W,
ELEVATION 637FT/HEIGHT 328FT, RADIUS 1NM.

---Nov 020936z-UFN

MILITARY INVASION OF UKRAINE BY RUSSIAN FEDERATION.
IRISH AIR OPERATORS AND OWNERS OF AIRCRAFT REGISTERED IN IRELAND
SHALL NOT ENTER UIR KYIV (UKBU), FIR LVIV (UKLV), FIR KYIV (UKBV),
FIR DNIPROPETROVSK (UKDV), FIR SIMFEROPOL (UKFV), FIR ODESA (UKOV),
FIR ROSTOV-NA-DONU (URRV).
IRISH OPERATORS AND AIRCRAFT OWNERS SHALL ALSO AVOID FLIGHT
OPERATIONS WITHIN THE BUFFER ZONE EXTENDING OUT TO 200NM ALONG THE
UKRAINE/RUSSIA BORDER.
OPERATIONS WITHIN THE FIR CHISINAU (LUUU) AIRSPACE SHALL ONLY BE
UNDERTAKEN IN COMPLIANCE WITH APPLICABLE AERONAUTICAL PUBLICATIONS
ISSUED BY REPUBLIC OF MOLDOVA.

---Oct 021750z-UFN

HOLDING PROCEDURE CHANGED. RATE OF DESCENT IN HOLDING PATTERNS
AMENDED TO: A STANDARD RATE OF DESCENT OF 1000FT PER
MIN IN HOLDING PATTERNS WILL BE USED UNLESS OTHERWISE INSTRUCTED BY
ATC. PILOTS MUST ADVISE ATC IF UNABLE TO COMPLY WITH THE STANDARD
RATE OF DESCENT.
REF AIP ENR 1.5 SECTION 1.3

Restricted Airspace



///Feb 010600z-Mar 010600z

DANGER AREA EID6 KILWORTH, CO. CORK ACTIVATED

F) GND G) 8000FT AMSL

---Jan 030800z-Feb 112100z

WED-SUN 0800-2100

A TEMPORARY RESTRICTION (TEMPORARY RESTRICTED AREA) ON THE FLYING OF AIRCRAFT AND ROCKETS AS DEFINED IN S.I. NO. 25 OF 2023, INCLUDING UNMANNED AIRCRAFT SYSTEMS (UAS) AS DEFINED IN S.I. NO. 24 OF 2023 AND COMMISSION IMPLEMENTING REGULATION (EU) 2019/947, SHALL APPLY IN THE VICINITY OF BALBRIGGAN, COUNTY DUBLIN IN THE AIRSPACE CONTAINED WITHIN THE UNDER MENTIONED:

LATERAL LIMITS: THE AIRSPACE CONTAINED WITHIN THE FOLLOWING:

533627.5985N 0061331.8206W

533543.9707N 0061225.4608W

533534.4200N 0061110.0100W

533529.4164N 0060832.8495W

533754.0595N 0061101.7391W

533659.7484N 0061400.2017W

POINT OF CONTACT DURING ACTIVATION: MR DENNIS HOUSTON +353 87 9458870

OR MR KEVIN HOUSTON +353 87 2603223

STATE AIRCRAFT, AIRCRAFT OF THE IRISH COAST GUARD SERVICE AND HEMS OPERATORS EMPLOYED ON AN OPERATIONAL MISSION SHALL BE EXEMPT FROM THE RESTRICTION

F) SFC G) 500FT AMSL

---Nov 202300z-Feb 202300z

A TEMPORARY RESTRICTION (TEMPORARY RESTRICTED AREA) ON THE FLYING OF AIRCRAFT AND ROCKETS AS DEFINED IN S.I. NO. 25 OF 2023, INCLUDING UNMANNED AIRCRAFT SYSTEMS (UAS) AS DEFINED IN S.I. NO. 24 OF 2023 AND COMMISSION IMPLEMENTING REGULATION (EU) 2019/947, SHALL APPLY IN THE VICINITY OF BANGOR ERRIS, COUNTY MAYO IN THE AIRSPACE CONTAINED WITHIN THE UNDER MENTIONED:

LATERAL LIMITS: A CIRCLE RADIUS OF 0.6NM CENTRED ON:

540733.1N 0094659.5W

POINT OF CONTACT DURING ACTIVATION 0031 612334747 OR

E.IJSSELMUIDEN(AT)KITEPOWER.NL

STATE AIRCRAFT, AIRCRAFT OF THE IRISH COASTGUARD SERVICE AND HEMS OPERATORS EMPLOYED ON AN OPERATIONAL MISSION SHALL BE EXEMPT FROM THE RESTRICTION.

F) SFC G) 3100FT AMSL

FRANCE FIR/UIR (LFFF)

NO RECENT SIGMET

FIR/UIR

///Feb 011605z-Feb 220000z

TOP OF OBST NR E1800 LGT U/S (2 WINDTURBINES OUT OF 8)

- RDL 279/5.7NM LFLD ARP

WINDTURBINES U/S : E1800-6 ET E1800-7

MEAN PSN : 470453N 0021403E

HEIGHT : 492FT



ELEV: 899FT
///Jan 311412z-Apr 301000z
OBST E800Z LIGHTING U/S (4 WINDTURBINES OUT OF 13) - RDL 216/10.8NM
LFAG ARP :
- MEAN PSN : 494308N 0025111E
- ELEVATION : 762FT.
///Jan 301557z-Feb 240000z
AIR NAVIGATION OBSTACLE E800E LIGHTING U/S (1 WIND TURBINE OUT OF 6)
RDL 237/6.74NM ARP LFAG :
AVERAGE PSN : 494827N 0025308E
MAX ELEV: 682FT
HEIGHT : 397FT
---Jan 261653z-Feb 160000z
OBST NR 28061 LIGHTS U/S
RDL 151.7/9.78NM LFOR ARP
-PSN : 481853N 0013818E
-HEIGHT : 315FT
-ELEV : 788FT.
---Jan 261042z-Feb 101000z
CUMULONIMBUS FORECASTING PRODUCTS ARE UNAVAILABLE.
---Jan 251640z-Feb 150000z
OBST E800M LIGHTS U/S (1 WINDTURBINE OUT OF 30)
RDL090/8.72 NM LFAR
PSN : 494021N 0024729E
ELEV : 787FT.
---Jan 251054z-UFN
OBST NR 60087 COMPLETELY WITHDRAWN AT 'LIEUVILLERS',
RDL 283/11.69NM LFAD ARP (COMPIEGNE MARGNY)
PSN: 492833N 0023044E
---Jan 241341z-Apr 240000z
5 WIND TURBINES LIGHTINGS U/S (NR E8905-3 TO E8905-7) - RDL 009/19NM
LFLA ARP :
- AVERAGE PSN : 480922.3N 0033421.5E
- ELEV : 1306FT
- HGT : 492FT.
---Jan 231547z-UFN
OBST NR 02137 COMPLETELY WITHDRAWN AT 'MONTLOUE'
RDL 313/16.25NM LFAP ARP (RETHEL PERTHES)
PSN: 493953N 0040323E
---Jan 221650z-Apr 221200z
OBST LIGHT NR E8072-3 U/S
RDL 225/5.9 NM LFAG
AVERAGE PSN : 494826N 0025607E
ALT MAX : 795.
---Jan 221646z-Feb 110000z
OBST NR E8032 LIGHTING U/S (2 WIND TURBINES OUT OF 13) :
RDL245/14.23NM AMIENS CENTRE HOSPITALIER UNIVERSITAIRE SUD HLP MEAN
PSN : 494627N 0015522E
ELEV : 1003FT
HEIGHT : 406FT
---Jan 221646z-Feb 110000z
OBST NR E8001 LIGHTING U/S, (2 WINDTURBINES OUT OF 26):
-RDL 092/6.28NM LFAE AD
AVERAGE PSN: 500343N 0013550E



AVERAGE HEIGHT:410FT
AVERAGE ELEV :720FT.
---Jan 221624z-Feb 110000z
OBST LIGHT NR E8055 U/S (1 WINDTURBINE OUT OF 10)
RDL 250/6.87 NM L FAG
PSN MEDIUM : 494947N 0025147E.
---Jan 220853z-Feb 220000z
OBSTACLE LIGHT NR E6202 U/S (4 WINDTURBINES OUT OF 22) -
RDL 188/8NM ARP LFQN :
-PSN : 503546N 0021216E
-HEIGHT : 328FT
-ELEVATION : 925FT.
---Jan 191542z-Mar 312359z
TMA DEAUVILLE HOURS OF SERVICE:
- MON-SAT: 0700-1900
- SUN : 0800-1900
EXC JAN 20 21 22 30 31 : DEACTIVATED
---Jan 191540z-Mar 312359z
DEAUVILLE FIS HOURS OF OPS :
- MON-SAT : 0700-1900
- SUN : 0800-1900
EXC JAN 20 21 22 30 31 : DEACTIVATED AND SERVICE PROVIDED BY :
- 'RENNES INFO' 134.200MHZ (WEST AREA)
- 'PARIS INFO' (EAST AREA)125.700MHZ NORTH
129.625MHZ SOUTH
---Jan 151330z-Feb 190700z
CONTROL AND REPORTING CENTRE OF CINQ-MARS-LA-PILE - 'RAKI' - IS
CLOSED DUE TO MAINT :
ALERT, FLIGHT INFORMATION AND CONTROL ARE NOT PROVIDED.
CONTROL AND REPORTING CENTRE OF MONT DE MARSAN - 'MARINA', WILL
PROVIDE FOR HISTORICAL AREA OF 'RAKI' AND CONTROL AND REPORTING
CENTRE OF LYON MONT-VERDUN - 'RAMBERT', WILL PROVIDE FOR NORTH-EAST
AREA OF 'RAKI', FROM MONTLUCON TO NEVERS, FROM LA FERTE GAUCHE TO
CHARLEVILLE-MEZIERES.
CDC BIV MARINA: 865 118 8126 - 33 (0)5 58 06 84 51
CDC BIV RAMBERT: 864 942 6655 - 33 (0)4 87 65 56 55
CDC CINQ MARS LA PILE POC : 33 (0)2 47 96 28 63.
---Jan 111517z-Mar 312359z
FRENCH AIR CARRIERS AND CAPTAINS OF AIRCRAFT IN CHARGE OF AIR
SERVICES OPERATED BY CARRIERS HOLDING AN OPERATING LICENSE ISSUED BY
FRANCE, WHETHER THEY ARE CONTRACTUAL CARRIERS AND/OR OPERATING
CARRIERS, OR PERFORMING AIR SERVICES THROUGH A WET LEASE OR A
CODESHARE AGREEMENT AS WELL AS FOR ANY FLIGHT MADE WITH AN AIRCRAFT
REGISTERED IN FRANCE ARE REQUESTED :
- NOT TO PENETRATE IN THE PART OF THE CHISINAU FIR (LUUU) LOCATED
OVER MOLDOVAN TERRITORY IN THE PORTION OF AIRSPACE DEFINED BY THE
POINTS 481502N - 0263725E, ALONG THE BORDER BETWEEN MOLDOVA AND
UKRAINE, 452824N- 0281218E, ALONG THE BORDER BETWEEN MOLDOVA AND
ROMANIA, 453849N 0281026E, 463506N 0285540E, 463810N 0293434E,
470714N 0291023E, 472351N 0285959E, 475250N 0284929E, 481839N
0274319E, 481439N 0264935E, ALONG THE BORDER BETWEEN MOLDOVA AND
ROMANIA, 481502N 0263725E
- NOT TO IDENTIFY AS ALTERNATE, WHEN PLANNING FLIGHT OPERATIONS,
AERODROMES LOCATED IN THE ABOVE OVERFLIGHT PROHIBITED AREA



- TO COMPLY STRICTLY WITH THE INSTRUCTIONS GIVEN BY THE MOLDOVAN AUTHORITIES PROVIDING AIR TRAFFIC SERVICES.
THIS NOTAM SUPERSEDES THE RESTRICTIONS CONCERNING MOLDOVAN AIRSPACE (FIR CHISINAU (LUUU)) ISSUED IN PARAGRAPH 3.1 UKRAINE RUSSIA BELARUS MOLDOVA OF THE AIC CURRENTLY IN EFFECT.
THE PROHIBITIONS AND RESTRICTIONS ON UKRAINIAN, RUSSIAN AND BELARUS AIRSPACE ISSUED IN PARAGRAPH 3.1. OF THE CURRENT AIC REMAIN IN EFFECT

---Jan 090851z-Apr 090000z
WIND TURBINE NR E1017-5 LIGHTS U/S - RDL 312/5NM LFFN ARP :
PSN : 482905.76N 0042314.26E
ELEV : 1033FT
HGT : 492FT.

---Jan 021420z-Apr 020000z
OBSTACLE LIGHT, WINDTURBINE NR E1017-5 U/S
RDL 312/5NM LFFN
PSN : 482906N 0042314E
ELEVATION : 1033FT
HEIGHT : 492FT.

---Jan 020911z-Apr 020000z
OBSTACLE E0801-1, LIGHTING U/S:
-QDR139/4.8NM LFSJ AD
PSN: 493556N 0050711E
ELEV : 1500FT
HEIGHT: 437FT

---Dec 300000z-Mar 302359z
MON-FRI 0000-0900 1100-1300 1700-2359 EXC JAN 01, JAN 01 H24, , SAT
SUN H24
IFR TRAINING PROHIBITED WITHIN 'DEAUVILLE' TMA 1, TMA 2, AND
'DEAUVILLE' FIS 1A AND 1B (AIRSPACE ACT OR NOT).

---Dec 121718z-Mar 312359z
RUSSIA AND BELARUS RESTRICTIONS :
1- ALL AIRCRAFT REGISTERED IN RUSSIA OR OPERATED BY RUSSIAN AIR CARRIERS, INCLUDING AS A MARKETING CARRIER IN CODE-SHARING OR BLOCKED-SPACE ARRANGEMENTS OR OWNED, CHARTERED OR OPERATED BY A RUSSIAN NATURAL OR LEGAL PERSON, ENTITY OR BODY ARE PROHIBITED TO LAND IN, TAKE OFF FROM OR OVERFLY THE FRENCH SOVEREIGN AIRSPACE EXCEPT IN CASE OF EMERGENCY LANDING OR EMERGENCY OVERFLIGHT AND EXCEPT FOR FLIGHTS HOLDING A PERMISSION DELIVERED IN ACCORDANCE WITH THE APPROPRIATE EU REGULATION BY THE FRENCH AUTHORITIES
2- ALL AIRCRAFT OPERATED BY BELARUSIAN AIR CARRIERS, INCLUDING AS A MARKETING CARRIER IN CODE-SHARING OR BLOCKED-SPACE ARRANGEMENTS, ARE PROHIBITED TO LAND IN, TAKE OFF FROM OR OVERFLY THE FRENCH SOVEREIGN AIRSPACE
EXCEPT IN CASE OF EMERGENCY LANDING OR EMERGENCY OVERFLIGHT AND EXCEPT FOR FLIGHTS HOLDING A PERMISSION DELIVERED IN ACCORDANCE WITH THE APPROPRIATE EU REGULATION BY THE FRENCH AUTHORITIES
3- IT SHALL BE PROHIBITED TO PARTICIPATE, KNOWINGLY AND INTENTIONALLY, IN ACTIVITIES THE OBJECT OR EFFECT OF WHICH IS TO CIRCUMVENT THESE PROHIBITIONS.

---Dec 120817z-Mar 080800z
LAPWINGS AND PLOVERS MIGRATION (100 TO 700 INDIVIDUALS) :
- VERTICAL LIMITS : BTN SFC AND 2000FT AMSL
- 'EVREUX' AREA
- NORTH/SOUTH AXIS.



---Nov 301243z-May 302359z
VFR PROHIBITED ABOVE FL115 WITHIN SECTORS CONTROLLED BY 'PARIS CTL'
EXC SPECIAL ACTIVITIES AUTHORIZED BY 'PARIS CTL'.
---Nov 300000z-Nov 282359z
IMPLEMENTATION OF 3 FPL BUFFER ZONE (FBZ) ASSOCIATED WITH
'LF-CBA1TL', 'LF-CBA1TM' AND 'LF-CBA1TH' CROSS-BORDER AREAS. - AIRAC
AIP SUP 201/23.
THIS AIP SUP IS AVBL AT WWW.SIA.AVIATION-CIVILE.GOUV.FR
---Nov 131634z-Feb 202359z
AUTOMATIC INFORMATION TRANSMITTER 118.625MHZ OF AREAS LF-R175A AND B
SUIPPES U/S.
---Nov 070959z-Feb 072359z
WINDTURBINE E5302-1 LIGHTS U/S:
-RDL 264/14NM LFOF ARP
-PSN : 482516.61N 0001416W
-HEIGHT : 392FT
-ELEV : 1360FT.
---Oct 131028z-UFN
WITHDRAWAL OF OBST NR 80122 AT 'AUMATRE', RDL 188/13NM ARP LFOI PSN :
495543N 0014706E
---Aug 120448z-Apr 171857z
SR-SS
TEMPORARY TRANSPONDER MANDATORY ZONE (TEMPO TMZ) TO IMPROVE
AERONAUTICAL SAFETY IN THE VICINITY OF 'CAEN CARPIQUET' AD WHEN
'DEAUVILLE' TMA PART 2 IS DEACTIVATED.
1/ LATERAL AND VERTICAL LIMITS :
- LATERAL LIMITS : IDENTICAL TO 'DEAUVILLE' TMA PART 2 (REF FRANCE
AIP ENR 2.1.3 TMA)
- VERTICAL LIMITS : 2500FT AMSL / FL065
2/ STATUS :
TEMPORARY TMZ, WHEN ACTIVE, COEXISTS WITH OVERLAPPING AIRSPACE. 3/
MANAGING AUTHORITIES :
- 'RENNES INFO' IN BREST FIR,
- 'PARIS INFO' IN PARIS FIR.
4/ SERVICES PROVIDED : FLIGHT INFORMATION AND ALERT PROVIDED BY
MANAGING AUTHORITIES.
5/ GAT/OAT ENTRY CONDITIONS :
MANDATORY TRANSPONDER A+C MODE OPERATING, CODE 7000 OR ALLOCATED BY
MANAGING AUTHORITIES.
6/ SPECIAL PROVISIONS :
- DEROGATION IN ACCORDANCE WITH PROTOCOL
- TEMPORARY TMZ ONLY ACTIVE WHEN 'DEAUVILLE' TMA PART 2 IS
DEACTIVATED
7/ ACTUAL ACTIVITY PROVIDED BY :
RENNES INFO : 134.200MHZ
PARIS INFO : 129.625MHZ / 125.700MHZ.
---Aug 100941z-UFN
WITHDRAWAL OBST NR 80129 AT 'HOMBLEUX', RDL 188/8.54NM ARP LFAG PSN :
494341N 0030003E
---Jul 131226z-UFN
OBST NR 02139, MEASUREMENT MAST, COMPLETELY WITHDRAWN AT COULANGES
COHAN
RDL 049/13.56NM LFFH ARP
PSN: 491254N 0033658E



---May 180000z-Jun 122359z
CONSTRUCTION OF THE 'TOUR TRIANGLE' CLOSE TO 'PARIS ISSY LES
MOULINEAUX' HELIPORT - AIP SUP 088/23 :
SUBJECT : TEMPORARY MODIFICATION OF HELICOPTER ROUTE BTN LFPI AND IH3
(GENTILLY).
THIS AIP SUP IS AVBL AT WWW.SIA.AVIATION-CIVILE.GOUV.FR

Restricted Airspace

///Jan 310658z-Apr 171921z
MON-FRI SR MINUS30-SS PLUS30 EXC APR 01
TEMPORARY RESTRICTED AREA ('ZRT') NEARBY 'FORGES LES EAUX' -
UNMANNED ACFT FLIGHTS OUT OF SIGHT :
1/LATERAL LIMITS
493659N 0012742E
493618N 0013209E
493232N 0013204E
493345N 0012556E
493659N 0012742E
2/STATUS
TEMPORARY RESTRICTED AREA ('ZRT') WHICH REPLACES THE OVERLAPPING
AIRSPACE.
3/SERVICES PROVIDED
FLIGHT INFO AND ALERT PROVIDED BY 'PARIS INFO' OR 'BEAUVAIS APP'
4/GAT-OAT ENTRY CONDITIONS
COMPULSORY AVOIDANCE DURING ACTUAL ACTIVITY EXC FOR ACFT ON
ASSISTANCE, RESCUE, NATIONAL SECURITY OR CIVIL SAFETY MISSIONS WHEN
FORCED TO ENTER, AFTER PHONE CONTACT WITH THE OPERATION MANAGER (TEL
: +33 6 58 58 84 58)
5/ACTUAL ACTIVITY AVBL ON :
'PARIS INFO' : 125.700MHZ
'BEAUVAIS APP' : 123.985MHZ.
F) SFC G) 330FT AGL
///Jan 290700z-Feb 090700z
AIP SUP 048/23 : 'ZRT ABLIS' ACT
F) SFC G) 2500FT AMSL
---Jan 251704z-Dec 312359z
NIGHT OUT OF SIGHT UNMANNED ACFT FLIGHTS IN THE 'HAUT DE FRANCE'
REGION - AIP SUP 009/24.
SUBJECT : CREATION OF A TEMPORARY RESTRICTED AREA ('ZRT DRONE
AIRGHT').
ACTIVATION OF THE 'ZRT' BY NOTAM.
THIS AIP SUP IS AVBL AT WWW.SIA.AVIATION-CIVILE.GOUV.FR
F) SFC G) 400FT AGL
---Jan 251704z-Feb 072359z
TRIGGER NOTAM - AIP SUP 009/24 WEF 25 JAN TIL 31 DEC 2024 : NIGHT
OUT OF SIGHT UNMANNED ACFT FLIGHTS IN THE 'HAUT DE FRANCE' REGION
REQUIRING THE CREATION OF A TEMPORARY RESTRICTED AREA ('ZRT DRONE
AIRGHT').
F) SFC G) 400FT AGL
---Jan 110000z-Jan 152359z
REMOTELY PILOTED ACFT TRANSIT OVER FRANCE UIR - AIP SUP 232/23 :
SUBJECT : CREATION OF 3 TEMPORARY RESTRICTED AREAS AND OF ONE
TEMPORARY DANGEROUS AREA ('ZRT OPAL', 'ZRT TREVERI' AND 'ZRT/ZDT



RIVIERA').
 AREAS ACTIVATION BY NOTAM PN 48HR.
 THIS AIP SUP IS AVBL AT WWW.SIA.AVIATION-CIVILE.GOUV.FR
 F) FL490 G) FL550
 ---Jan 020800z-Dec 312300z
 PROTECTION OF MIL ACFT TRAJECTORIES IN RELATION WITH AIR TO GROUND
 SHOOTING ACTIVITY IN THE REGION OF 'SUIPPES' - AIP SUP 229/23 :
 SUBJECT : CREATION OF 5 TEMPORARY RESTRICTED AREAS.
 THIS AIP SUP IS AVBL AT WWW.SIA.AVIATION-CIVILE.GOUV.FR
 F) SFC G) FL195
 ---Jan 020000z-UFN
 TEMPORARY RESTRICTED AREA 'ZRT STAT' WITHIN THE AREA OF 'MOURMELON
 LE GRAND'DUE TO UNMANNED ACFT ACTIVITIES.
 1- LATERAL LIMITS :
 1NM RADIUS CIRCLE CENTRED ON 490629N 004220E
 2- DATES AND HOURS OF ACTIVITY :
 HR24 ACTIVABLE
 3- MANAGER :
 'SECTION TECHNIQUE DE L'ARMEE DE TERRE (STAT)'
 4- STATUS :
 RESTRICTED AREA WHICH WHEN IT IS ACTIVE TAKES PLACE OF OVERLAPPING
 LF-R 175A 'SUIPPES' PART.
 5- ENTRY CONDITIONS :
 GAT/OAT : COMPULSORY BY-PASS.
 6- SERVICES PROVIDED :
 FLIGHT INFORMATION AND ALERT
 7- USERS INFORMATION :
 ACTUAL ACTIVITY AVBL ON :
 -AUTOMATIC INFORMATION TRANSMITTER : 118.625MHZ
 -SAINT DIZIER APP : 134.775MHZ
 -PARIS ACC : 120.955MHZ (1)
 - SEINE INFO : 120.325MHZ (1)
 (1) INFORMATION ONLY AVBL WHEN AUTOMATIC INFORMATION TRANSMITTER IS
 NOT IN FUNCTION.
 8-AUTHORITY TO CONTACT :
 -MANAGER
 PHONE : +33 326 67 81 00 / 81 02 / 82 31
 F) SFC G) 2000FT AMSL
 ---Jan 010000z-Dec 312359z
 UNMANNED ACFT FLYING OUT OF SIGHT OVER THE ENGLISH CHANNEL - AIP SUP
 228/23 :
 SUBJECT : CREATION OF 9 TEMPORARY RETRICTED AREAS AND OF ONE
 TEMPORARY DANGEROUS AREA.
 MODEL FLYING ACTIVITY NR 8345 MAY BE SUSPENDED.
 THIS AIP SUP IS AVBL AT WWW.SIA.AVIATION-CIVILE.GOUV.FR
 F) SFC G) 1500FT AMSL
 ---Nov 300837z-Apr 172359z
 FLIGHTS OF STATE DRONES - AIP SUP 066/23 MODIFIED :
 SUBJECT : TEMPORARY CREATION OF 89 RESTRICTED AND 4 DANGER AREAS.
 THESE AREAS WILL BE ACTIVATED BY NOTAM.

 --
 CORRECTIONS :
 PAGE 23 :



1/'ZRT AMIENS HIGH' : LATERAL LIMITS MODIFIED AS FOLLOWS : 501344N
0022235E
501342N 0023048E
495007N 0022658E
495007N 0021844E
501344N 0022235E
2/ADD 'ZRT LIEVIN HIGH' :
-LATERAL LIMITS :
502550N 0023328E
502550N 0024504E
501342N 0023048E
501344N 0022235E
501518N 0022251E
502550N 0023328E
-VERTICAL LIMITS :
FL205/FL215
-ACTUAL ACTIVITY AVBL ON :
PARIS CTL : 135.550MHZ/128.875MHZ

THIS AIP SUP IS AVBL AT WWW.SIA.AVIATION-CIVILE.GOUV.FR
F) FL125 G) FL215
---Nov 300000z-Nov 282359z
MILITARY OPERATIONS WITHIN FRENCH UIR AND BRUSSELS UIR - AIRAC AIP
SUP 200/23 :
SUBJECT : CREATION OF 3 TEMPORARY SEGREGATED CROSS-BORDER AREAS
('LF-CBA1TL', 'LF-CBA1TM' AND 'LF-CBA1TH'), 1 TEMPORARY CIRCULAR
AIRBORNE EARLY WARNING PATTERN ('FR20T') AND 1 AIR-TO-AIR REFUELING
PATTERN ('CLARA').
THIS AIP SUP IS AVBL AT WWW.SIA.AVIATION-CIVILE.GOUV.FR
F) FL195 G) FL355
---Nov 231534z-UFN
DRONE ACTIVITY OVER 'OISSEL', RDL 247/5.6NM ARP LFOF
-PSN : 492113N 0010315E
-HOURS : 0730-2100 (SUM SKED : -1HR) EXC ON SAT SUN AND PUB HOL
-ACCORDING TO PROTOCOL
F) SFC G) 395FT AGL
---Nov 231530z-UFN
UA ACT AT 'MIGNIERES':
PSN: 482301N 0012521E
HOURS : SR-SS
F) SFC G) 400FT AGL
---Nov 231447z-UFN
MODEL FLYING ACT NR8899 NOTTONVILLE MODIFIED :
PSN : 480704N 0012930E - RDL051/5.8NM LFOC ARP
UPPER LIMIT RAISED TO 1000FT AGL
F) SFC G) 1450FT AMSL
---Nov 231431z-UFN
MODEL FLYING ACT AT AMBILLOU - RDL275/11NM LFOT :
PSN : 472654N 0002713E
HOURS : SR-SS
F) SFC G) 200FT AGL
---Nov 231351z-UFN
MODEL FLYING ACTIVITY NR8906 'FEIGNEUX' MODIFIED (PSN : 491523N
0025436E) :



- HOURS MODIFIED : SR-SS+4HR
- NIGHT FLIGHTS : UPPER LIMIT LIMITED TO 330FT AGL AND ACFT EQUIPPED
WITH
LIGHTING DEVICES.
F) SFC G) 1150FT AMSL
---Nov 120656z-Feb 111710z
SR-SS
MODEL FLY ACT OVER 'CLOYES LES TROIS RIVIERES' - RDL 242/6NM
LFOC :
- PSN : 480038N 0011438E
- INFO : SEINE INFO 127.815MHZ
F) SFC G) 400FT AGL
---Nov 060800z-Mar 291600z
CREATION OF 3 TEMPORARY RESTRICTED AREAS (ZRT) FOR OUT-OF-SIGHT
EVOLUTIONS OF AN UA FOR SURVEILLANCE OF ELECTRIC LINES IN 'RETHEL'
(08) AND 'DE VOUZIERES' (08) AREAS.
- LATERAL LIMITS :
.ZRT 1 'BOULT SUR SUIPPE-BARBY' :
492234N 0041050E
492358N 0040839E
493005N 0042044E
493059N 0041856E
492234N 0041050E
.ZRT 2 'BETHENIVILLE-BIGNICOURT' :
492401N 0042317E
492358N 0042657E
491816N 0041920E
491717N 0042349E
492401N 0042317E
.ZRT 3 'SOMMEPY TAHURE-VOUZIERES' :
492334N 0043942E
492349N 0044202E
492014N 0044143E
491627N 0043813E
491504N 0043346E
491601N 0043313E
492334N 0043942E
- DATES AND HOURS OF ACTIVITY :
ZRT CAN BE ACTIVATED EVERY DAY FM 0800 TO 1600
ACTUAL ACTIVITY FORECAST AVBL H-48 BY PHONE : +33 7 64 50 41 37 NO
SIMULTANEOUS ACTIVATION OF THE ZRT
- STATUS :
TEMPO RESTRICTED AREAS (ZRT)
- ENTRY CONDITIONS :
OAT/GAT : COMPULSORY AVOIDANCE EXC FOR :
.UA TAKING PARTS OF THE ACTIVITY,
.STATE ACFT OR ACFT ON PUBLIC SAFETY, ASSISTANCE OR RESCUE MISSIONS
WHEN FORCED TO ENTER, AND AFTER CONTACT WITH THE FLIGHT DIRECTOR -
SERVICES PROVIDED :
FLIGHT INFORMATION AND ALERT PROVIDED BY PARIS INFO : 125.700MHZ -
AUTHORITIES TO CONSULT :
BEFORE AND DURING ACTIVITY :
FLIGHT DIRECTOR : +33 7 64 50 41 37.
F) SFC G) 500FT AGL



---Oct 050615z-Oct 021600z
SPECIFIC ACTIVITIES USING DEFENSE ACFT FROM 'COGNAC' BASE - AIP SUP 179/23:
SUBJECT : CREATION OF 2 TEMPORARY RESTRICTED AREAS ('ZRT 7X1 COGNAC' AND 'ZRT 7X2 COGNAC').
THIS AIP SUP IS AVBL AT WWW.SIA.AVIATION-CIVILE.GOUV.FR
F) FL105 G) FL195

---Sep 050000z-Dec 312359z
SPECIAL AIR SECURITY DEVICE OVER PARIS AREA - AIP SUP 161/23 :
SUBJECT : CREATION OF 2 TEMPORARY RESTRICTED AREAS.
THESE AREAS WILL BE ACTIVATED BY NOTAM WITH A PRIOR NOTICE OF 72 HEURES.
THIS AIP SUP IS AVBL AT WWW.SIA.AVIATION-CIVILE.GOUV.FR
F) FL205 G) FL225

---Jul 261526z-Apr 172359z
AIP ENR 5.1 LF-P214L BRIENNE LE CHATEAU MODIFIED. NEW CONTACT :
DPID-DAME-ZICAD.CHEF-DPT.FCT(AT)INTRADEF.GOUV.FR
F) SFC G) 500FT AGL

---Jul 240806z-Apr 172359z
PROHIBITED OVERFLIGHT OF DEFENSE FACILITIES - AIP SUP 061/23 :
SUBJECT : CREATION OF A TEMPORARY PROHIBITED AREA ('ZIT CREIL'). THIS AIP SUP IS AVBL AT WWW.SIA.AVIATION-CIVILE.GOUV.FR
F) SFC G) 2500FT AMSL

---Jun 290000z-Jun 262359z
STATE UNMANNED ACFT FLYING, OUT OF SIGHT - AIP SUP 136/23 : SUBJECT : CREATION OF A TEMPORARY RESTRICTED AREA ('ZRT DRONES'). ACTIVATION FORECAST ANNOUNCED BY NOTAM WITH 48HR PN.
THIS AIP SUP IS AVBL AT WWW.SIA.AVIATION-CIVILE.GOUV.FR
F) SFC G) 3400FT AMSL

---May 220600z-May 171100z
UNMANNED ACFT FLIGHTS OVER 'CHAUMONT' REGION - AIP SUP AIP 097/23 :
SUBJECT : CREATION OF 2 TEMPORARY RESTRICTED AREAS ('ZRT TRANSIT' AND 'ZRT PATROLLER').
THIS AIP SUP IS AVBL AT WWW.SIA.AVIATION-CIVILE.GOUV.FR
F) FL055 G) FL095

---May 170851z-UFN
WINCHED FREE FLIGHT AT 'THENAY', RDL 080/14.5NM ARP LFEF :
- PSN : 472257N 0011732E
- VERTICAL LIMITS : SFC / 3300FT AGL - 3650FT AMSL
- HOURS : SR-SS PLUS30
- NOT LIGHTED WHITE CABLE
- WINCH EQUIPPED WITH A ROTATING LIGHT
- ACTUAL ACTIVITY AVBL ON : AVORD APP AND SEINE INFO (OR PARIS INFO OUTSIDE ATS SEINE HOURS OF OPS)
F) SFC G) 3650FT AMSL

---May 170829z-UFN
WINCHED FREE FLIGHT AT 'PONTLEVOY 2', RDL 072/11.6NM ARP LFEF :
- PSN : 472406N 0011241E
- VERTICAL LIMITS : SFC / 3300FT AGL - 3650FT AMSL
- HOURS : SR-SS PLUS30
- NOT LIGHTED WHITE CABLE
- WINCH EQUIPPED WITH A ROTATING LIGHT
- ACTUAL ACTIVITY AVBL ON : AVORD APP AND SEINE INFO (OR PARIS INFO OUTSIDE ATS SEINE HOURS OF OPS)



F) SFC G) 3650FT AMSL
 ---May 170826z-UFN
 WINCHED FREE FLIGHT AT 'PONTLEVOY 1', RDL 074/13NM ARP LFEF :
 - PSN : 472358N 0011455E
 - VERTICAL LIMITS : SFC / 3300FT AGL - 3650FT AMSL
 - HOURS : SR-SS PLUS30
 - NOT LIGHTED WHITE CABLE
 - WINCH EQUIPPED WITH A ROTATING LIGHT
 - ACTUAL ACTIVITY AVBL ON : AVORD APP AND SEINE INFO (OR PARIS INFO
 OUTSIDE ATS SEINE HOURS OF OPS)
 F) SFC G) 3650FT AMSL
 ---Apr 200000z-Apr 172359z
 SPECIFIC DEFENSE ACTIVITIES - AIP SUP 048/23 :
 SUBJECT : CREATION OF A TEMPORARY RESTRICTED AREA ('ZRT ABLIS') IN
 FIR PARIS, CAN BE ACTIVATED BY NOTAM WITH 72 HOURS NOTICE.
 THIS AIP SUP IS AVBL AT WWW.SIA.AVIATION-CIVILE.GOUV.FR
 F) SFC G) 2500FT AMSL
 ---Apr 200000z-Apr 172359z
 OVERFLIGHT OF SPECIFIC DEFENSE INSTALLATIONS PROHIBITED - AIP SUP
 049/23:
 SUBJECT: CREATION OF A TEMPO PROHIBITED AREA ('ZIT TAVERNY'). THIS
 AIP SUP IS AVBL AT WWW.SIA.AVIATION-CIVILE.GOUV.FR
 F) SFC G) 2500FT AMSL
 ---Apr 200000z-Apr 172359z
 FLIGHT RESTRICTION OVER 'PARC NATIONAL DE FORETS' AND CREATION OF
 EXPERIMENTAL TRANSIT CORRIDORS - AIP SUP 055/23 :
 THIS AIP SUP IS AVBL AT WWW.SIA.AVIATION-CIVILE.GOUV.FR
 F) SFC G) 3300FT AGL
 ---Feb 200620z-Apr 171916z
 FLIGHTS OF UNMANNED ACFT EVOLVING OUT OF SIGHT - AIP SUP 008/23 :
 SUBJECT : CREATION OF 2 TEMPORARY RESTRICTED AREAS ('ZRT SUD
 FRANCILIEN 1 AND 2').
 'ZRT' ACTIVATED BY NOTAM.
 THIS AIP SUP IS AVBL AT WWW.SIA.AVIATION-CIVILE.GOUV.FR
 F) SFC G) 500FT AGL

 LONDON FIR/UIR (EGTT)

///SIGMET Feb 042310z-Feb 050310z
 WSUK31 EGRR 042308
 EGTT SIGMET 07 VALID 042310/050310 EGRR- EGTT LONDON FIR SEV
 TURB FCST WI N5252 E00158 - N5457 W00036 - N5458 E00252 -
 N5441 E00444 - N5234 E00255 - N5252 E00158 SFC/FL060 STNR
 NC=
 ///SIGMET Feb 042345z-Feb 050345z
 WSUK31 EGRR 042310
 EGTT SIGMET 08 VALID 042345/050345 EGRR- EGTT LONDON FIR SEV
 MTW FCST WI N5315 W00041 - N5139 W00246 - N5141 W00509 -
 N5457 W00522 - N5456 W00107 - N5315 W00041 FL040/250 STNR
 NC=

FIR/UIR



///Feb 021855z-Apr 302359z
EAST MIDLANDS LOWER AIRSPACE RADAR SER MAY NOT BE AVBL AT TIMES DUE
TO STAFF SHORTAGE
///Feb 010000z-Feb 292359z
MARHAM LOWER AIRSPACE RADAR HOURS:
01 FEB 0830 - 1830
02-04 FEB CLOSED
05 FEB 1100 - 2000
06 FEB 1030 - 2000
07 FEB 1030 - 2000
08 FEB 1000 - 2000
09 FEB 0830 - 1730
10-11 FEB CLOSED
12 FEB 1000 - 1730
13-16 FEB 0830 - 1730
17-18 FEB CLOSED
19 FEB 0830 - 1730
20-23 FEB 0830 - 1730
24-26 FEB CLOSED
27-29 FEB 0830 - 1730
---Jan 250000z-Feb 072359z
TRIGGER NOTAM - PERM AIRAC AIP AMDT 01/24 WEF 25 JAN 24
MULTIPLE GEN OR ENR CHANGES, SEE COVER SHEET FOR FULL DETAILS
---Jan 150830z-Feb 161300z
YEOVILTON LOWER AIRSPACE RADAR SERVICE AMENDED HOURS OF OPERATION MON
TO THU 1000-1600
FRI 0900-1300
---Jan 130000z-UFN
ADD NEW WOODVALE GLIDER SITE (MIL), MERSEY (AD) (W AND T) LOCATION:
533454N 0030327W
UPPER LIMIT: 2000FT AGL
LOWER LIMIT: SFC
CONTACT: AIRFIELD DUTY SUPERVISOR DURING NOTIFIED HOURS 07866-995297
SITE ELEVATION: 37FT AMSL
FREQ: 121.000 MHZ (WOODVALE RADIO), 119.750 MHZ (WOODVALE TOWER)
HOURS: SAT-SUN AND PH, SR-SS+15
NOTE: GLIDING MAY TAKE PLACE WHEN ATZ IS INACTIVE
UK AIP ENR 5.5 REFERS
---Jan 041759z-Feb 080000z
AIP SUP 031/2023 UKRAINE CRISIS - AIRSPACE RESTRICTION - REPLACE DUTY
OFFICER EMAIL WITH AVIATIONRESILIENCE(AT)DFT.GOV.UK.
NOTAM WILL BE SUPERSEDED BY SUP 016/2024 WEF 02/08/2024.
---Dec 050831z-UFN
ADD NEW KINGS FARM MICROLIGHT SITE, RUTLAND
LOCATION: 523702N 0003611W
SITE ELEVATION: 210FT AMSL
HOURS: HJ
UK AIP ENR 5.5 REFERS
---Dec 050830z-UFN
ADD NEW OVER FARM MICROLIGHT SITE, GLOUCESTER
LOCATION: 515239N 0021657W
PHONE: 07831-237353
SITE ELEVATION: 47FT AMSL



HOURS: HJ
STRICTLY PPR.
UK AIP ENR 5.5 REFERS

Waypoint

///Feb 030134z-Feb 231700z
VOR/DME CLN/CLACTON 114.550MHZ CH92Y DME PART U/S
///Feb 010600z-Feb 091700z
LANDS END VOR/DME 'LND' FREQ 114.20MHZ CH089X, DVOR U/S
---Jan 100700z-Feb 151730z
VOR/DME LON/LONDON 113.60MHZ CH083X VOR. THERE MAY BE OBSERVATIONS
OF DVOR BEARING FLUCTUATIONS WITHIN THE 355-035 DEG MAG SECTOR
RADIALS FROM THE LONDON VOR/DME STATION, DUE TO CRANE ACTIVITY
---Dec 281100z-Mar 281059z
VOR/DME OCK/OCKHAM 115.300 MHZ / CH100X NOT AVBL. AIC 129/2023
REFERS

Restricted Airspace

///Feb 050600z-Feb 051600z
PIPELINE INSPECTION NOTIFICATION PROCEDURE SYSTEM (PINS) WILL TAKE
PLACE IN THE FOLLOWING LOW FLYING AREAS - 1, 2, 3, 4, 5, 6, 7N, 7S,
8, 9, 10, 11N, 11S, 12, 13, 14E, 16, 17, 18, 19 AND THE THAMES VALLEY
AVOIDANCE AREA MAX HEIGHT 2000FT AGL. UK AIP ENR 6 (PINS AREAS AND UK
DAY LOW FLYING SYSTEM (DLFS)) REFERS. 24/02/011/LFC F) SFC G) 6500FT
AMSL
///Feb 050000z-Feb 051600z
TEMPO DANGER AREA (TDA) EGD098C ACTIVATED WI AN AREA BOUNDED BY:
505359N 0005825E - 510326N 0011118E - 510756N 0012635E -
510635N 0012927E - 510149N 0011316E - 505315N 0010128E -
505359N 0005825E (ENGLISH CHANNEL). BEYOND VISUAL LINE OF SIGHT UAS
OPS CONTAINED WHOLLY WI THE TDA. A DANGER AREA ACTIVITY INFO SERVICE
(DAAIS) WILL BE AVBL FM EITHER LONDON INFO ON FREQ 124.600MHZ (OPR
H24) OR FM LYDD ATC ON FREQ 120.705MHZ LYDD APPROACH DURING THE HR OF
WATCH. AIC Y112/2023 REFERS. 2022-04-0105/AS2
F) SFC G) 1500FT AMSL
///Feb 050000z-Feb 051600z
TEMPO DANGER AREA (TDA) EGD098D ACTIVATED WI AN AREA BOUNDED BY:
505315N 0010128E - 510149N 0011316E - 510635N 0012927E -
510336N 0013547E - 510227N 0013230E - 505659N 0012114E -
505345N 0011650E - 504948N 0011548E - 505315N 0010128E (ENGLISH
CHANNEL). BEYOND VISUAL LINE OF SIGHT UAS OPS CONTAINED WHOLLY WI THE
TDA. A DANGER AREA ACTIVITY INFO SERVICE (DAAIS) WILL BE AVBL FM
EITHER LONDON INFO ON FREQ 124.600MHZ (OPR H24) OR FM LYDD ATC ON
FREQ 120.705MHZ LYDD APPROACH DURING THE HR OF WATCH. AIC Y112/2023
REFERS. 2022-04-0105/AS2
F) SFC G) 1500FT AMSL
///Feb 050000z-Feb 051600z
TEMPO DANGER AREA (TDA) EGD098E ACTIVATED WI AN AREA BOUNDED BY:
510756N 0012635E - 511454N 0013137E - 512251N 0013322E -
511740N 0015439E - 511447N 0020000E - 511153N 0015200E -
510607N 0014309E - 510336N 0013547E - 510756N 0012635E (ENGLISH
CHANNEL). BEYOND VISUAL LINE OF SIGHT UAS OPS CONTAINED WHOLLY WI THE



TDA. A DANGER AREA ACTIVITY INFO SERVICE (DAAIS) WILL BE AVBL FM EITHER LONDON INFO ON FREQ 124.600MHZ (OPR H24) OR FM LYDD ATC ON FREQ 120.705MHZ LYDD APPROACH DURING THE HR OF WATCH. AIC Y112/2023 REFERS. 2022-04-0105/AS2
F) SFC G) 2500FT AMSL
///Feb 050000z-Feb 051600z
TEMPO DANGER AREA (TDA) EGD098F ESTABLISHED WI AN AREA BOUNDED BY:
510352N 0010451E - 510550N 0011325E - 510425N 0011438E -
510326N 0011118E - 510008N 0010648E - 510352N 0010451E.
(ENGLISH CHANNEL) BEYOND VISUAL LINE OF SIGHT UAS OPS CONTAINED WHOLLY WI THE TDA. A DANGER AREA ACTIVITY INFO SERVICE (DAAIS) WILL BE AVBL FM EITHER LONDON INFO ON FREQ 124.600MHZ (OPR H24) OR FM LYDD ATC ON FREQ 120.705MHZ LYDD APPROACH DURING THE HR OF WATCH. AIC Y112/2023 REFERS. 2022-04-0105/AS2
F) SFC G) 1500FT AMSL
///Feb 050000z-Feb 051600z
TEMPO DANGER AREA (TDA) EGD098H ACTIVATED WI AN AREA BOUNDED BY:
STRAIGHT LINES JOINING 510831N 0012227E - 510756N 0012635E - 510629N 0012136E THENCE THE ANTICLOCKWISE ARC OF A CIRCLE RADIUS OF 2.25NM CENTRED ON 510800N 0011900E BTN 510629N 0012136E - 510831N 0012227E (PORT OF DOVER). BEYOND VISUAL LINE OF SIGHT UAS OPS CONTAINED WHOLLY WI THE TDA. A DANGER AREA ACTIVITY INFO SERVICE (DAAIS) WILL BE AVBL FM EITHER LONDON INFO ON FREQ 124.600MHZ (OPR H24) OR FM LYDD ATC ON FREQ 120.705MHZ LYDD APPROACH DURING THE HR OF WATCH. AIC Y112/2023 REFERS. 2022-04-0105/AS2
F) SFC G) 800FT AMSL
///Feb 050000z-Feb 051600z
TEMPO DANGER AREA (TDA) EGD098G ACTIVATED WI AN AREA BOUNDED BY:
504118N 0002647E - 504815N 0004937E - 503926N 0010808E -
503300N 0005110E - 504118N 0002647E (ENGLISH CHANNEL). BEYOND VISUAL LINE OF SIGHT UAS OPS CONTAINED WHOLLY WI THE TDA. A DANGER AREA ACTIVITY INFO SERVICE (DAAIS) WILL BE AVBL FM EITHER LONDON INFO ON FREQ 124.600MHZ (OPR H24) OR FM LYDD ATC ON FREQ 120.705MHZ LYDD APPROACH DURING THE HR OF WATCH. AIC Y112/2023 REFERS. 2022-04-0105/AS2
F) SFC G) 2000FT AMSL
///Feb 050000z-Feb 051600z
TEMPO DANGER AREA (TDA) EGD098A ACTIVATED WI AN AREA BOUNDED BY:
504815N 0004937E - 505359N 0005825E - 505315N 0010128E -
504703N 0005208E - 504815N 0004937E (ENGLISH CHANNEL). BEYOND VISUAL LINE OF SIGHT UAS OPS CONTAINED WHOLLY WI THE TDA. A DANGER AREA ACTIVITY INFO SERVICE (DAAIS) WILL BE AVBL FM EITHER LONDON INFO ON FREQ 124.600MHZ (OPR H24) OR FM LYDD ATC ON FREQ 120.705MHZ LYDD APPROACH DURING THE HR OF WATCH. AIC Y112/2023 REFERS. 2022-04-0105/AS2
F) SFC G) 1500FT AMSL
///Feb 050000z-Feb 051600z
TEMPO DANGER AREA (TDA) EGD098B ACTIVATED WI AN AREA BOUNDED BY:
504703N 0005208E - 505315N 0010128E - 504948N 0011548E -
504139N 0011414E - 503926N 0010808E - 504703N 0005208E (ENGLISH CHANNEL). BEYOND VISUAL LINE OF SIGHT UAS OPS CONTAINED WHOLLY WI THE TDA. A DANGER AREA ACTIVITY INFO SERVICE (DAAIS) WILL BE AVBL FM EITHER LONDON INFO ON FREQ 124.600MHZ (OPR H24), OR FM LYDD ATC ON FREQ 120.705MHZ LYDD APPROACH DURING THE HR OF WATCH. AIC Y112/2023



REFERS. 2022-04-0105/AS2
 F) SFC G) 1500FT AMSL
 ///Feb 010800z-Feb 291700z
 MON-FRI 0800-1700
 DANGER AREA EG D324A WADDINGTON LOW ACTIVATED
 F) SFC G) FL105
 ///Feb 010800z-Feb 291800z
 0800-1800
 FLYING OF MODEL ACFT WI 0.5NM RADIUS 510656N 0021657W (2.7NM SOUTH OF
 MAIDEN BRADLEY). FOR INFO CONTACT 07740 149245. AR-2024-272/AU2.
 F) SFC G) 2810FT AMSL
 ///Jan 311130z-Feb 091600z
 JAN 31 1130-1600, FEB 01-09 0900-1600
 UAS OPR BEYOND VISUAL LINE OF SIGHT (BVLOS) UTILISING VISUAL
 OBSERVERS (EXTENDED LINE OF SIGHT) WI 0.5NM RADIUS OF
 521328N 0013528E (LEISTON, SUFFOLK) MAX HGT 650FT AGL. FOR INFO 07557
 486516. AR-2024-455/AO3
 F) SFC G) 700FT AMSL
 ///Jan 310749z-Mar 211823z
 SR-SS
 MILITARY AIRCRAFT SHALL AVOID BOURTON VALE EQUESTRIAN CENTRE IN LOW
 FLYING AREA 4 WI 2NM RADIUS OF PSN 515348N 0014535W (FOSSE
 WAY,COTSWOLDS) MILITARY AIRCRAFT SHALL AVOID THE AREA FROM SURFACE TO
 2000FT AGL. 24/01/159/LFC
 F) SFC G) 2500FT AMSL
 ///Jan 291700z-Apr 182359z
 D AND E BAND HIGH INTENSITY RADIO TRANSMISSION AREA (HIRTA) IN LOW
 FLYING AREA 2 AND NIGHT ROTARY REGION 2 AT PSN 504048N 0021514W,
 (EAST KNIGHTON, DORSET) RADIUS 1NM. MAX HEIGHT 461FT AGL.
 23/01/150/LFC
 SAFE DISTANCES

CIVILIAN ACFT	0.0802NM	148FT AGL
MIL ACFT SUSCEPTIBILITY		
VERY LOW	0.0626NM	55FT AGL
LOW	0.0811NM	152FT AGL
MEDIUM	0.0968NM	235FT AGL
HIGH	0.1397NM	461FT AGL

 F) SFC G) 536FT AMSL
 ///Jan 291700z-Apr 182359z
 D AND E BAND HIGH INTENSITY RADIO TRANSMISSION AREA (HIRTA) IN LOW
 FLYING AREA 1C AND NIGHT ROTARY REGION 1 AT PSN 513404N 0011906W,
 (CHILTON, OXFORDSHIRE) RADIUS 1NM. MAX HEIGHT 461FT AGL.
 24/01/152/LFC
 SAFE DISTANCES

CIVILIAN ACFT	0.0802NM	148FT AGL
MIL ACFT SUSCEPTIBILITY		
VERY LOW	0.0626NM	55FT AGL
LOW	0.0811NM	152FT AGL
MEDIUM	0.0968NM	235FT AGL
HIGH	0.1397NM	461FT AGL

 F) SFC G) 903FT AMSL
 ///Jan 291700z-Apr 182359z
 D AND E BAND HIGH INTENSITY RADIO TRANSMISSION AREA (HIRTA) IN LOW
 FLYING AREA 6 AND NIGHT ROTARY REGION 4A AT PSN 514949N 0004048W,



(TRING, HERTFORDSHIRE) RADIUS 1NM. MAX HEIGHT 461FT AGL.
23/01/151/LFC
SAFE DISTANCES
CIVILIAN ACFT 0.0802NM 148FT AGL
MIL ACFT SUSCEPTIBILITY
VERY LOW 0.0626NM 55FT AGL
LOW 0.0811NM 152FT AGL
MEDIUM 0.0968NM 235FT AGL
HIGH 0.1397NM 461FT AGL
F) SFC G) 782FT AMSL
///Jan 291700z-Apr 182359z
D AND E BAND HIGH INTENSITY RADIO TRANSMISSION AREA (HIRTA) IN LOW
FLYING AREA 4 AND NIGHT SECTOR 5E AT 520752N 0024511W (WELLINGTON,
HEREFORDSHIRE) RADIUS 1NM. MAX HEIGHT 461FT AGL. 24/01/153/LFC
SAFE DISTANCES
CIVILIAN ACFT 0.0802NM 148FT AGL
MIL ACFT SUSCEPTIBILITY
VERY LOW 0.0626NM 55FT AGL
LOW 0.0811NM 152FT AGL
MEDIUM 0.0968NM 235FT AGL
HIGH 0.1397NM 461FT AGL
F) SFC G) 687FT AMSL
///Jan 291234z-UFN
AIRSPACE SECURITY WARNING ISSUED BY THE UK DEPARTMENT FOR TRANSPORT.
CIVIL AIR OPERATORS ARE ADVISED TO TAKE POTENTIAL RISK INTO ACCOUNT
WHEN OPERATING OVER THE WATERS OF THE RED SEA
DUE TO POTENTIAL RISK FROM HEIGHTENED MILITARY ACTIVITY. FOR MORE
INFO UK DEPARTMENT FOR TRANSPORT 0207 082 6639 OR 0207 944 3111 OUT
OF HOURS. AR 2024-515/AU4
F) SFC G) UNL
///Jan 291233z-UFN
AIRSPACE SECURITY WARNING ISSUED BY THE UK DEPARTMENT FOR TRANSPORT.
UK CIVIL AIR OPERATORS ARE ADVISED TO TAKE RISK INTO ACCOUNT WHEN
OPERATING UP TO 150 NM FROM 287600N 347100E OF (GULF OF AQABA) DUE TO
POTENTIAL RISK FROM HEIGHTENED MILITARY ACTIVITY. FOR MORE INFO UK
DEPARTMENT FOR TRANSPORT 0207 082 6639 OR 0207 944 3111 OUT OF HOURS.
AR 2024-515/AU4
F) SFC G) UNL
---Jan 281200z-Mar 301914z
1200-SS PLUS30
KITE FLYING 0.5NM RADIUS 503708N 0032151W (SANDY BAY, E OF EXMOUTH,
DEVON). FOR INFO 07843 098727 OR 01395 279443. 2023-06-0611/AS7.
F) SFC G) 1300FT AMSL
---Jan 260830z-Mar 211600z
MON-FRI 0830-1600
ENVIRONMENTAL AVOID WILL TAKE PLACE IN LOW FLYING AREA 4 WI 1NM
RADIUS OF PSN 515348N 0014535W (BOURTON-ON-THE-WATER,
GLOUCESTERSHIRE). MIL ACFT SHALL AVOID THE AREA FROM SFC TO 2000FT
AGL. OPS CTC 07910 138465. 24/01/129/LFC
F) SFC G) 3000FT AMSL
---Jan 250900z-Apr 072000z
JAN 25-MAR 30 0900-2100, MAR 31-APR 07 0800-2000
FLYING OF MODEL ACFT WI 1NM RADIUS 515908N 0020452W
(ASHCHURCH). FOR INFO CONTACT 07778 034399. AR-2024-191/AU2.



F) SFC G) 1700FT AMSL
---Jan 250800z-Jan 251700z
UNMANNED CAPTIVE BALLOON WI 1NM RADIUS: 523413N 0011256W
(NARBOROUGH, LEICESTERSHIRE). MAX HGT 198FT AGL.
FOR INFO 01162 001011. AR-2023-39054/AU3.
F) SFC G) 520FT AMSL
---Jan 250800z-Feb 091800z
0800-1800
CIVIL AIRCRAFT NOTIFICATION PROCEDURE - UNDERSLUNG LOADS WILL
OPERATE LOW FLYING AREA 8 AND NIGHT SECTOR 3A WI 2NM RADIUS OF PSN
532521N 0014035W, (STRINES, S YORKS.). MAX HEIGHT 500FT AGL.
ACFT MAY BE RESTRICTED IN ABILITY TO MANOEUVRE AND UNABLE TO COMPLY
WITH RAC OPS CTC 07909 464163. 24/01/117/LFC
F) SFC G) 2170FT AMSL
---Jan 240000z-Mar 231159z
UAS OPR BEYOND VISUAL LINE OF SIGHT (BVLOS) UTILISING VISUAL
OBSERVERS (EXTENDED LINE OF SIGHT) WI 1NM RADIUS OF
510636N 0020223W (CHILMARK). MAX HGT 1500FT AGL. FOR INFO
07826 918598. AR-2024-365/AU2
F) SFC G) 2150FT AMSL
---Jan 191353z-Mar 312230z
JAN 19 1353-2330, JAN 20-MAR 30 0800-2330, MAR 31 0700-2230
OTMOOR SMALL RANGE ACTIVATED WI 0.7NM RADIUS: 514910N 0011008W
(OTMOOR, OXFORD). AR-2023-39047/AU3.
F) SFC G) 950FT AMSL
---Jan 190811z-Apr 171911z
SR-SS
FLYING OF MODEL ACFT WI 0.5NM RADIUS 534202N 0011955W (PONTEFRACT
RACECOURSE). FOR INFO CONTACT 07802 725231.
AR-2024-198/AU2.
F) SFC G) 1790FT AMSL
---Jan 170900z-Mar 192000z
0900-2000
UAS OPR BEYOND VISUAL LINE OF SIGHT (BVLOS) UTILISING VISUAL
OBSERVERS (EXTENDED LINE OF SIGHT) WI 1NM RADIUS OF
515018N 0005744W (WESTCOTT). MAX HGT 800FT AGL. FOR INFO
07377 409423. AR-2024-1/AU2
F) SFC G) 1325FT AMSL
---Jan 170811z-Apr 171911z
SR-SS
KITE FLYING FOR FALCONRY PURPOSES AT VARIOUS POSITIONS WI 0.5NM
RADIUS 530842N 0012941W (HOLESTONE MOOR, NEAR ASHOVER). LARGE BIRDS
OF PREY FLYING TO/FROM THE KITE. FOR INFO TEL 07860 331351.
2023-04-0181/AS7.
F) SFC G) 2000FT AMSL
---Jan 151630z-UFN
AIRSPACE SECURITY WARNING ISSUED BY THE UK DEPARTMENT FOR TRANSPORT.
HAZARDOUS SITAUTION IN LEBANON. UK CIVIL AIR OPERATORS ARE ADVISED TO
TAKE POTENTIAL RISK INTO ACCOUNT IN BEIRUT FIR (OLBB). POTENTIAL RISK
FROM ANTI-AIRCRAFT WEAPONRY AND HEIGHTENED MILITARY ACTIVITY. FOR
INFO CONTACT UK DEPARTMENT FOR TRANSPORT 0207 086639 OR 0207 9443111
OUT OF HOURS. AR-2024-273/AU4
F) SFC G) UNL
---Jan 151230z-Mar 102359z



MILITARY AIR SYSTEMS ARE TO AVOID FLYING WITHIN 0.25NM OF SQUIRREL WOOD EQUESTRIAN CENTRE, PSN 524628N 0012457E (WORSTEAD, NORFOLK) IN LOW FLYING AREA 5 AND NIGHT ROTARY REGION 5. MIL ACFT SHALL AVOID THE AREA FROM SFC TO 500FT AGL. 24/01/076/LFC
F) SFC G) 550FT AMSL
---Jan 150900z-Mar 301800z
0900-1800
FLYING OF MODEL ACFT WI 0.6NM RADIUS 521123N 0002445W (WILDEN). FOR INFO CTC 07876 200320. AR-2023-64/AU2.
F) SFC G) 1270FT AMSL
---Jan 150800z-Mar 302230z
0800-2230
FLYING OF MODEL ACFT WI 1NM RADIUS 521435N 0012041W (SOUTHAM). MAX HGT 1500FT AGL. FOR INFO CTC 07801 281492. AR-2023-38996/AU2. F) SFC G) 2020FT AMSL
---Jan 150800z-Apr 160100z
JAN 15-MAR 30 0800-0200, MAR 31-APR 14 0700-0100, APR 15 , 0700-2359, APR 16 0000-0100
UAS SWARM OPR WI 0.5NM RADIUS OF 522128N 0010421W (WINWICK, NORTHAMPTONSHIRE). SWARM COMPRISED 400 UAS. MAX HGT 600FT AGL. FOR INFO 07970 017256. AR-2024-9/AU2
F) SFC G) 1060FT AMSL
---Jan 140900z-Mar 301800z
0900-1800
FLYING OF MODEL ACFT WI 0.5NM RADIUS 521203N 0002121W (COLMWORTH, BEDFORDSHIRE). FOR INFO CTC 07876 200320. AR-2024-60/AU2.
F) SFC G) 1150FT AMSL
---Jan 110801z-Apr 101849z
SR-SS
FLYING OF MODEL ACFT WI 0.3NM RADIUS 511327N 0000111W (OXTED). FOR INFO CONTACT 07966 439835. AR-2023-39099/AU2.
F) SFC G) 1460FT AMSL
---Jan 080800z-Mar 301600z
0800-1600
UAS OPR BEYOND VISUAL LINE OF SIGHT (BVLOS) UTILISING VISUAL OBSERVERS (EXTENDED LINE OF SIGHT) WI AREA BOUNDED BY
514511N 0004519W - 514531N 0004409W - 514239N 0004111W -
514210N 0004206W - 514511N 0004519W (GREAT MISSENDEN). MAX HGT 500FT AGL. FOR INFO 07464 713829. AR-2023-39055/AU2
F) SFC G) 1200FT AMSL
---Jan 080800z-Mar 301700z
0800-1700
UAS OPR BEYOND VISUAL LINE OF SIGHT (BVLOS) UTILISING VISUAL OBSERVERS (EXTENDED LINE OF SIGHT) WI AREA BOUNDED BY STRAIGHT LINES JOINING:
525714N 0002310W - 525812N 0001810W - 525637N 0001603W -
525501N 0001438W - 525407N 0001528W - 525450N 0002243W (SLEAFORD, LINCOLNSHIRE). MAX HGT 500FT AGL. FOR INFO 07464 713829.
AR-2023-39049/AS2
F) SFC G) 600FT AMSL
---Jan 080700z-Mar 302000z
0700-2000
FLYING OF MODEL ACFT WI 1NM RADIUS 503439N 0033202W (TEIGNMOUTH). FOR INFO CTC 07474 424630. AR-2023-39087/AU2.



F) SFC G) 2325FT AMSL
---Jan 061030z-Mar 301800z
1030-1800
FLYING OF MODEL ACFT WI 0.3NM RADIUS 504838N 0005525W (THORNEY ISLAND
AD). FOR INFO CONTACT 07906 078495 OR 07808 926007.
AR-2023-39102/AU2.
F) SFC G) 1225FT AMSL
---Jan 030900z-Mar 311600z
JAN 03-MAR 30 0900-1700, MAR 31 0800-1600
FLYING OF MODEL ACFT WI 0.5NM RADIUS 513348N 0013008W (WANTAGE). FOR
INFO CONTACT 07454 733211. AR-2024-3/AU2.
F) SFC G) 2300FT AMSL
---Jan 021058z-Feb 192359z
AIC Y127/2023 TEMPORARY DANGER AREA (TDA) - (DOLGELLAU) BVLOS RPAS 23
OCT 23 - 20 JAN 24 EXTENDED UNTIL 19 FEB 24.
AMEND PARAGRAPHS 1, 7, 8 AND 9 TO READ 23 OCT 23 - 19 FEB 24.
F) SFC G) 3500FT AMSL
---Jan 021049z-UFN
REPORTS OF KITE FLYING WI 0.5NM RADIUS: 511841N 0000439W (WHYTELEAFE,
WARLINGHAM) MAX HGT 1000FT AGL. (AO3)
F) SFC G) 1400FT AMSL
---Jan 010821z-Mar 191817z
SR-SS
INTENSE PARAMOTORING ACTIVITY WI 0.5NM RADIUS: 533912N 0010536W
(BALNE, NORTH YORKSHIRE). FOR INFO 01405 447049. AR-2023-39086/AU3.
F) SFC G) 1550FT AMSL
---Jan 010800z-Mar 312230z
JAN 01-MAR 30 0800-2330, MAR 31 0700-2230
MOODYS DOWN SMALL ARMS RANGE ACTIVATED WI 1NM RADIUS:
510911N 0012307W (BARTON STACEY). AR-2023-39043/AU3.
F) SFC G) 1050FT AMSL
---Jan 010001z-Mar 312359z
UAS SWARM OPR WI 1NM RADIUS OF 532107N 0004652W (STURTON-LE-STEEPLE,
NOTTINGHAMSHIRE). MAX HGT 600FT AGL. SWARM MADE UP OF 250 UAS. FOR
INFO 07547 155440. AR-2023-38958/AU2
F) SFC G) 650FT AMSL
---Dec 280900z-Mar 262030z
0900-2030
FLYING OF MODEL ACFT WI 0.5NM RADIUS 522203N 0012344W
(WOLSTON). FOR INFO CONTACT 07519 665738. AR-2023-38855/AU2.
F) SFC G) 1840FT AMSL
---Dec 210800z-Mar 202100z
UAS OPR WI 1NM RADIUS OF 505535N 0020117W (CASHMOOR). MAX HGT 1500FT
AGL. FOR INFO 07909 022800. AR-2023-39030/AU2
F) SFC G) 1900FT AMSL
---Dec 180954z-UFN
ADD SPARSHOLT COLLEGE SMALL ARMS RANGE
LOCATION: A CIRCLE, 1800M RADIUS, CENTRED AT 510515N 0012356W UPPER
LIMIT: 500FT AGL
LOWER LIMIT: SFC
UK AIP ENR 5.3 REFERS
F) SFC G) 500FT AGL
---Dec 120803z-Mar 111808z
SR-SS



FLYING OF MODEL ACFT WI 0.5NM RADIUS 510718N 0021047W (1.2NM SE OF MONKTON DEVERILL). FOR INFO CONTACT 07962 013388. AR-2023-38920/AU2.
F) SFC G) 2200FT AMSL
---Dec 011439z-Feb 292359z
UAS OPR BEYOND VISUAL LINE OF SIGHT (BVLOS) UTILISING VISUAL OBSERVERS (EXTENDED LINE OF SIGHT) WI 1NM RADIUS OF 510405N 0015526W (BURCOMBE, WILTSHIRE). MAX HGT 1500FT AGL. FOR INFO 07826 9185986. AR-2023-1250/AU2
F) SFC G) 2100FT AMSL
---Dec 010900z-Feb 291700z
0900-1700
UAS OPR BEYOND VISUAL LINE OF SIGHT UTILISING VISUAL OBSERVERS (EXTENDED LINE OF SIGHT) WI 1.6NM RADIUS OF 521045N 0002947W (CLAPHAM). MAX HGT 1000FT AGL. FOR INFO 07766 303116 OR 07973 163490. AR-2023-38583/AS2
F) SFC G) 1300FT AMSL
---Dec 010752z-Feb 291747z
SR-SS
FLYING OF MODEL ACFT WI 0.5NM RADIUS 514902N 0015625W (CHEDWORTH). FOR INFO CONTACT 07816 506828. AR-2023-38619/AU2.
F) SFC G) 2350FT AMSL
---Nov 300700z-Feb 272200z
MODEL ACFT FLYING WI 1NM RADIUS OF 515905N 0000950W (BALDOCK, HERTFORDSHIRE). MAX HGT 1500FT AGL. FOR INFO 07710 924721. AR-2023-38389/AU2
F) SFC G) 1850FT AMSL
---Nov 300700z-Feb 272200z
MODEL ACFT FLYING WI 1NM RADIUS OF 514300N 0001544W (SW OF LONDON COLNEY, HERTFORDSHIRE). MAX HGT 1500FT AGL. FOR INFO 07710 924721. AR-2023-38385/AU2
F) SFC G) 1950FT AMSL
---Nov 300700z-Feb 272200z
MODEL AIRCRAFT FLYING WI 1NM RADIUS OF 525527N 0005747E (BINHAM, NORFOLK). MAX HGT 1500FT AGL. FOR INFO 07710 924721. AR-2023-38388/AU2
F) SFC G) 1700FT AMSL
---Nov 291606z-Feb 262359z
SS-2359
LASER DISPLAY WI 1NM RADIUS 511923N 0021927W (HINTON CHARTERHOUSE, SOMERSET). FOR INFO 07809 543580. AR-2023-38493/AU2 F) SFC G) UNL
---Nov 280800z-Feb 182000z
FLYING OF MODEL ACFT WI 0.5NM RADIUS 522359N 0000612W (WARBOYS). FOR INFO CTC 07586 292737. AR-2023-38415/AU2.
F) SFC G) 1650FT AMSL
---Nov 270900z-Feb 252300z
0900-2300
UAS SWARM OPR WI 0.3NM RADIUS OF 511816N 0021845W (NORTON ST PHILIP). SWARM COMPRISED 1000 UAS. MAX HGT 400FT AGL. FOR INFO 07494 931472. AR-2023-38694/AU2
F) SFC G) 810FT AMSL
---Nov 270000z-Feb 242359z
FLYING OF MODEL ACFT WI 0.5NM RADIUS 505833N 0010222W (1NM S EAST MEON). FOR INFO CONTACT 07918 636564. AR-2023-38376/AU2.
F) SFC G) 2270FT AMSL



---Nov 210900z-Feb 160100z
0900-0100
UAS SWARM OPR WI 0.6NM RADIUS OF 524650N 0004227W (SEWSTERN). SWARM
COMPRISED 500 UAS. MAX HGT 600FT AGL. FOR INFO 07778 287350.
AR-2023-38544/AU2
F) SFC G) 1090FT AMSL

---Nov 140800z-Feb 102000z
0800-2000
FLYING OF MODEL ACFT WI 0.5NM RADIUS 532536N 0002754W (E OF BISHOP
NORTON). FOR INFO CONTACT 07851 515104. AR-2023-38518/AU2. F) SFC G)
1530FT AMSL

---Nov 140658z-Feb 121754z
SR MINUS30-SS PLUS30
KITE FLYING 1NM RADIUS 505000N 0032300W (LANGFORD, NEAR CULLOMPTON,
DEVON). FOR INFO, TEL 07780 825848. 2023-02-0106/AS7. F) SFC G)
1000FT AMSL

---Nov 121000z-Feb 161000z
MODEL AIRCRAFT FLYING WI 0.6NM RADIUS OF 531945N 0004725W
(NORTH LEVERTON, NOTTINGHAMSHIRE). MAX HGT 1200FT AGL. FOR INFO 07966
764803. AR-2023-38390/AU2
F) SFC G) 1850FT AMSL

---Nov 091522z-UFN
ADD NEW MODEL AIRCRAFT FLYING SITE
BLACKPOOL AND FYLDE, PRESTON, LANCASHIRE
LOCATION: 534827N 0025643W
UPPER LIMIT: 1500FT AGL
LOWER LIMIT: SFC
CONTACT: BLACKPOOL AND FYLDE RADIO CONTROLLED MODEL SOCIETY PHONE:
07771-370260
SITE ELEVATION: 66FT AMSL
HOURS: HJ
UK AIP ENR 5.5 REFERS
F) SFC G) 1566FT AMSL

---Oct 171358z-UFN
ADD NEW MODEL AIRCRAFT FLYING SITE
CADMORE END, BUCKINGHAMSHIRE
LOCATION: 513811N 0005319W
UPPER LIMIT: 1500FT AGL
LOWER LIMIT: SFC
CONTACT: HIGH WYCOMBE AND DISTRICT MODEL AIRCRAFT CLUB 07808 890650
SITE ELEVATION: 640FT AMSL
HOURS: HJ
UK AIP ENR 5.5 REFERS
F) SFC G) 2140FT AMSL

===== END ENROUTE AIRSPACES =====
===== COMPANY INFORMATION =====
---Oct 120330-UFN

WHEN PLANNING A COST INDEX, 2 OPTIONS ARE AVAILABLE. PILOTS MAY
EITHER SELECT A SPECIFIC COST INDEX NUMBER FROM THE LIST, OR THEY
MAY SELECT "AUTO". WHEN PLANNING AN "AUTO" COST INDEX, THE SYSTEM
WILL REFERENCE THE SCHEDULED "TIME ENROUTE" OPTION AND ATTEMPT TO
CHOOSE A COST INDEX WHICH CLOSELY MATCHES THIS VALUE. NOTE THAT



THE "TIME ENROUTE" OPTION IS MEANT AS A GATE TO GATE TIME (AS INDICATED ON AN AIRLINE'S FLIGHT SCHEDULE, FOR EXAMPLE). IF A "TIME ENROUTE" OF 2:30 IS SELECTED, THE SYSTEM WILL SUBTRACT THE TAXI TIMES FROM THIS VALUE TO DETERMINE THE SCHEDULED AIR TIME. IT WILL THEN DETERMINE AND USE THE COST INDEX WHICH MATCHES THIS AIR TIME.

---Jul 130320-UFN

ALL FLIGHT CREW: PLEASE PAY SPECIAL ATTENTION TO THE UNITS SELECTION WHEN GENERATING A FLIGHT PLAN. FAILURE TO IDENTIFY THE CORRECT UNITS WHEN REFUELING PRIOR TO FLIGHT CAN RESULT IN DEPARTING WITH INSUFFICIENT FUEL AND/OR AN ERRONEOUS PAYLOAD.

===== END COMPANY INFORMATION =====
===== END OF BRIEF =====